

Tapete Vaquinha

Gráfico 3 - Chão

Trabalhe na parte de baixo do corpo após fazer as patas

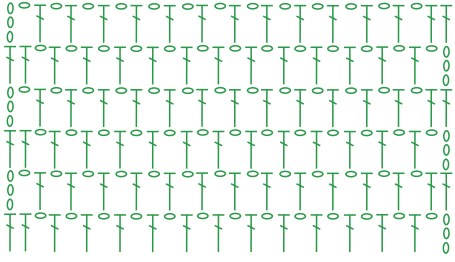


Gráfico 2 - Pata

Trabalhe na lateral do braço



Gráfico 4 Flor

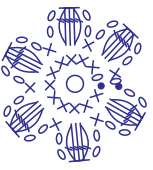


Gráfico 5 Mancha 1

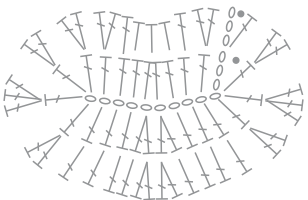


Gráfico 6 - Mancha 2

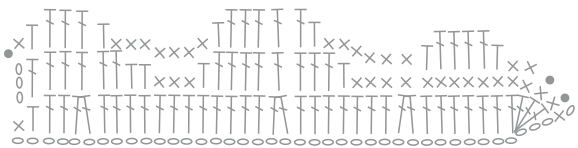


Gráfico 8 - Mancha 4

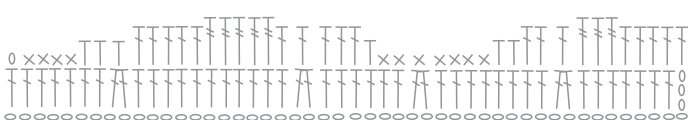


Gráfico 7 Mancha 3

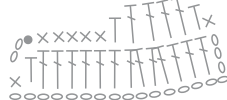


Gráfico 9 - Mancha 5

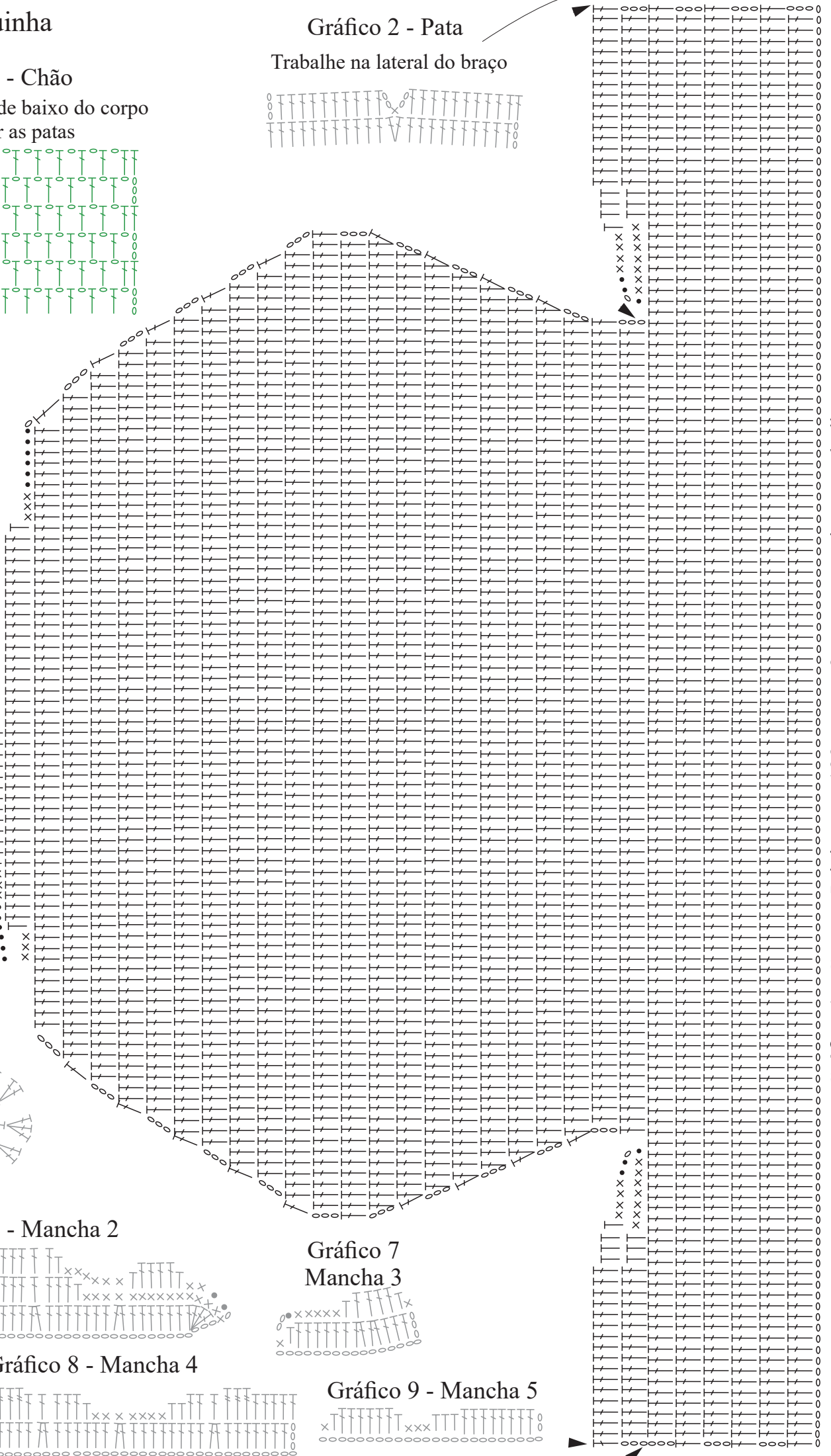


Gráfico 1 - Corpo - Inicie com 133 corr. + 3 corr. para virar o trabalho

Gráfico 10
Mancha 6

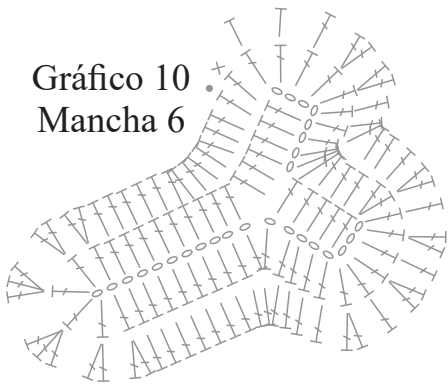


Gráfico 11 - Mancha 7



Gráfico 12 - Cabeça

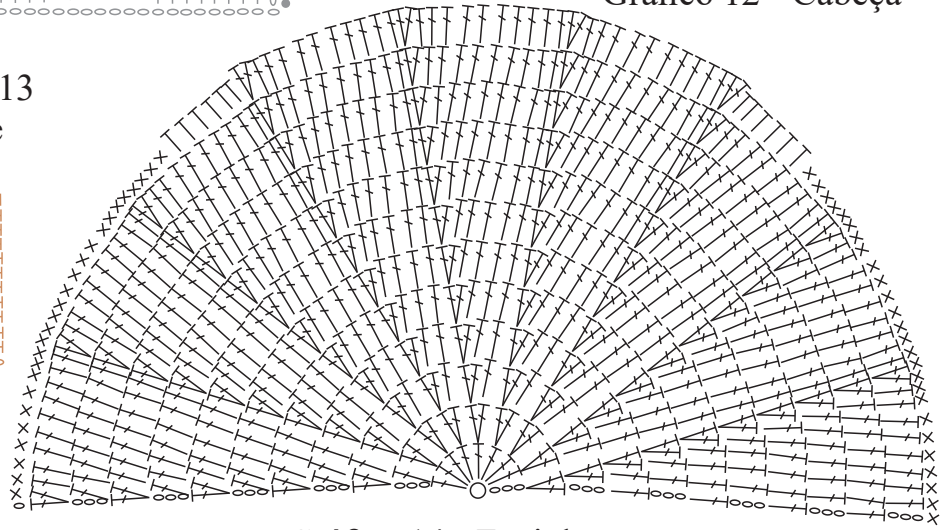
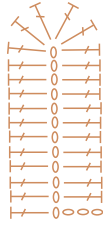


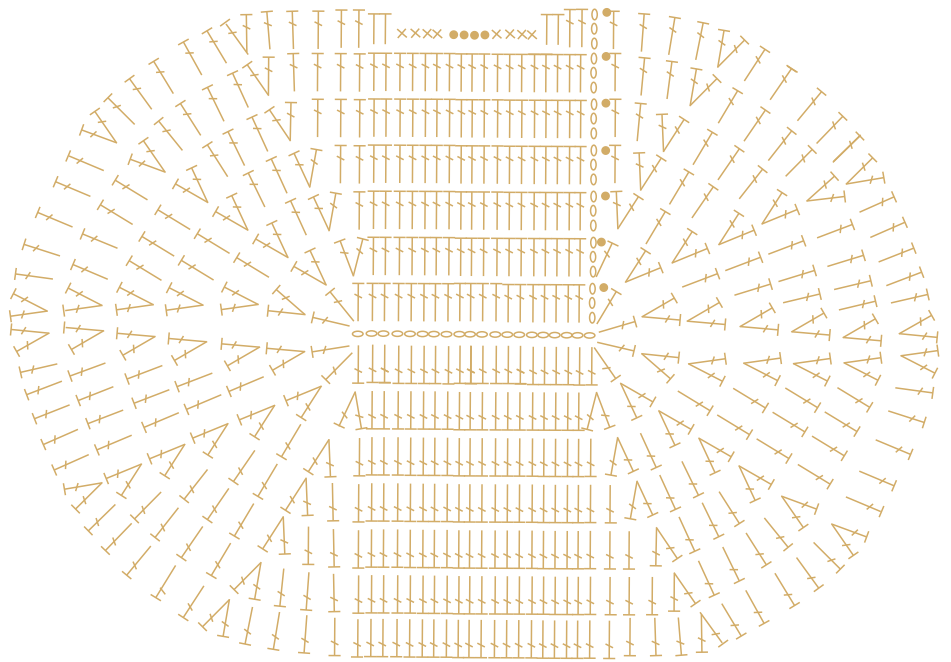
Gráfico 13
Chifre



Legenda

- Correntinha
- ┆ Ponto Alto
- × Ponto Baixo
- Ponto Baixíssimo
- ┆ Meio Ponto
- ⊞ Ponto Pipoca
- ┆ Ponto Alto Duplo
- ⌒ 2 Pontos altos fechados juntos
- B. Maxcolor (8001)
- B. Maxcolor (8990)
- B. Maxcolor (1114)
- B. Maxcolor (6085)
- B. Maxcolor (3526)
- B. Maxcolor (7259)
- B. Decore Luxo (453)
- Duna (9368)
- Duna (9427)
- Duna (3202)
- Duna (9172)

Gráfico 14 - Focinho



Esquema de
Montagem



Gráfico 17
Orelha

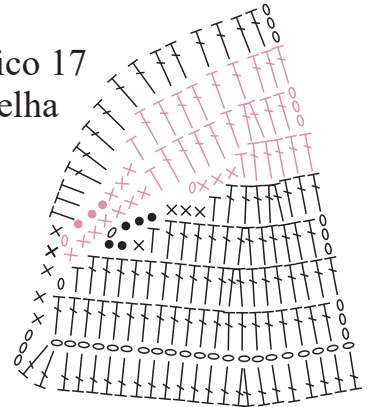


Gráfico 15
Olho (parte de trás)

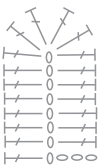


Gráfico 18 - Laço

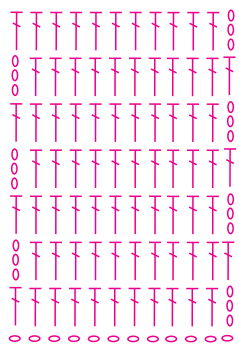


Gráfico 16
Olho (parte da frente)
e narinas

