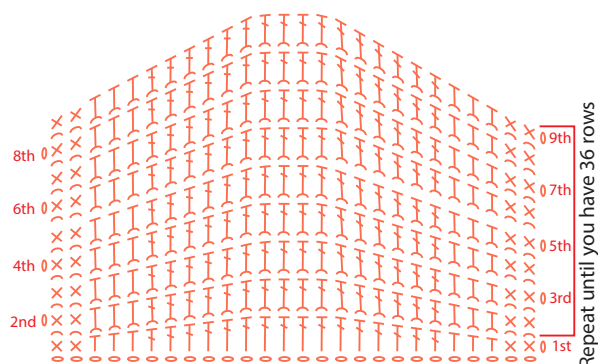


Diagram 1 - Basket Base

**NOTE:** ch 26 to start + 1 ch to turn the work



### Legend

- Chain Stitch
- Slip Stitch
- × Single Crochet
- + Waistcoat Stitch
- ⋈ 2 Waistcoat Stitches in the same stitch
- ⌈ Double Crochet
- ⌋ Half Double Crochet
- ⌋ Single Crochet worked through the back loop
- ⌋ Half Double Crochet worked through the back loop
- ⌋ Double Crochet worked through the back loop
- Magic ring

Invisible Finish (Remove the loop from the hook, insert it into the first st of the rnd, pull the loop through and remove from the hook, set it aside for the next step, insert the hook into the middle of the st that formed, yarn over, and pull through to the front, insert the hook into the loop that was set aside, yarn over, and pull through both loops at once)

- Círculo Premium T-shirt yarn - Color #4222 (Orange Peel)
- Círculo Premium T-shirt yarn - Color #8990 (Black)
- Círculo Premium T-shirt yarn - Color #5092 (Sage)

Diagram 2 - Basket Lid

**NOTE:** Work in the rnd

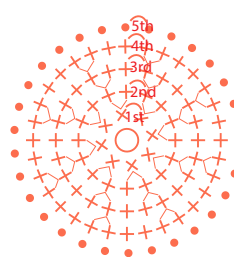


Diagram 3 - Leaf

**NOTE:** ch 5 to start  
+ 3 ch to turn the work



Diagram 4 - Stem

**NOTE:** ch 7 to start  
+ 2 ch to turn the work



Assembly Diagram

