

Diagrama 1 - P. Fantasia (A)

OBS.: carr. ímpares (dir.), carr. pares (avesso).



Diagrama 2 - P. Fantasia (B)

OBS.: carr. ímpares (dir.), carr. pares (avesso).

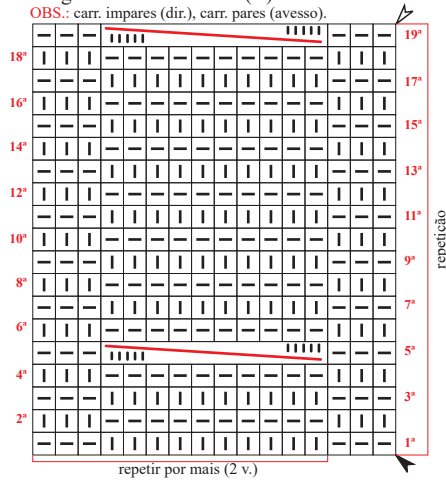


Diagrama 3 - Ponto meia

OBS.: carr. ímpares (dir.), carr. pares (avesso).

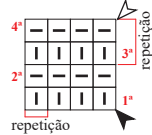
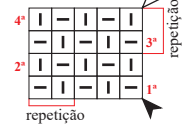
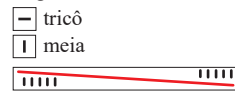


Diagrama 4 - Barra 1/1

OBS.: carr. ímpares (dir.), carr. pares (avesso).



Legenda



colocar 5 pts. à espera numa ag. auxiliar na frente do trab., tric. 5 m., retorne o p. deixado à espera para a ag. de tricô e tric. em m.,

- ▲ início
- △ arremate
- ↑↑ sentido do trabalho

Esquema de medidas

