

Diagrama 1 - Barra 2/2

OBS.: carr. ímpares (direito), carr. pares (avesso).

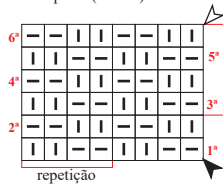


Diagrama 2 - Ponto meia

OBS.: carr. ímpares (direito), carr. pares (avesso).

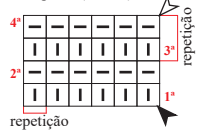


Diagrama 3 - Entrepernas

OBS.: carr. ímpares (direito), carr. pares (avesso).

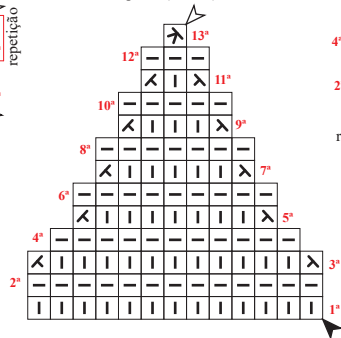
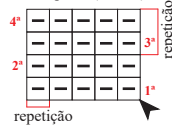


Diagrama 4 - Cordões de tricô

OBS.: carr. ímpares (direito), carr. pares (avesso).

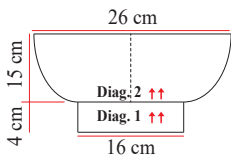


Legenda

- ▤ meia
- ▥ tricô
- ↗ md.
- ↘ 2 pts. j. em m.
- ⊗ ms.
- ▲ início
- △ arremate
- ↑↑ sentido do trabalho

1ª etapa

(Tric. a perna dir. e perna esq.)



2ª etapa

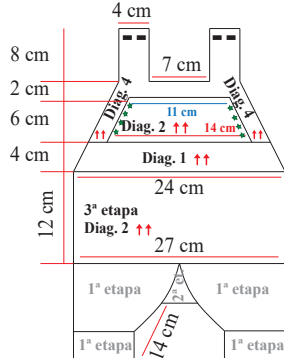
(entrepernas - 2 v.)



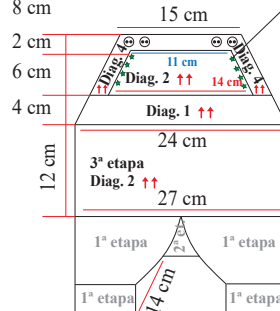
Esquema de medidas

3ª etapa (corpo da peça - Costas e Frente)

Costas



Frente



★ Dim. na pala à cada 2 carr. 2 pts. (4 v.)