

Diagrama 5 - Ponto fantasia (D)

→ = Trab. a carr. pelo avesso da peça (carr. pares).  
 ← = Trab. a carr. pelo dir. da peça (carr. ímpares).

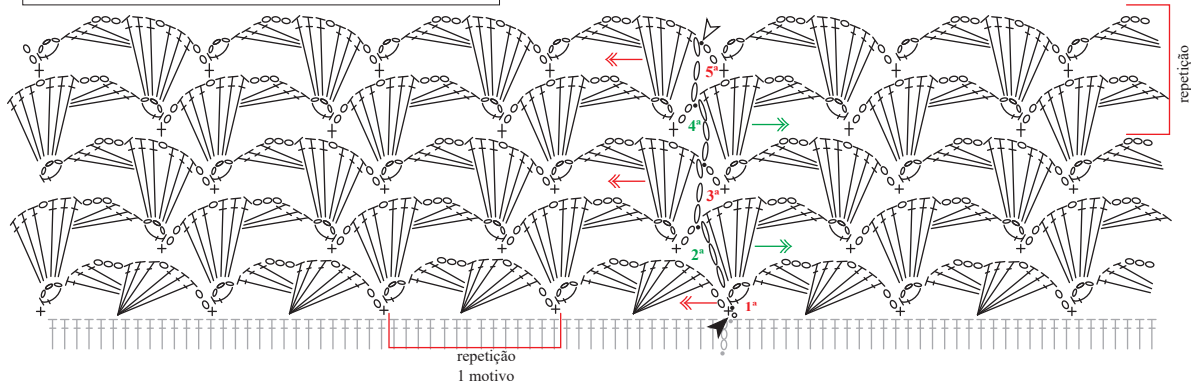


Diagrama 4 - Ponto fantasia (C)

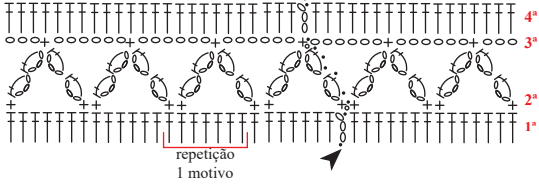


Diagrama 6 - Bico acabamento (E)

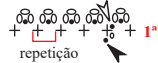


Diagrama 7 - Bico de acabamento (F)

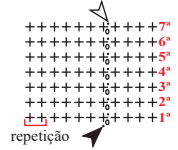


Diagrama 3 - Ponto fantasia (B)

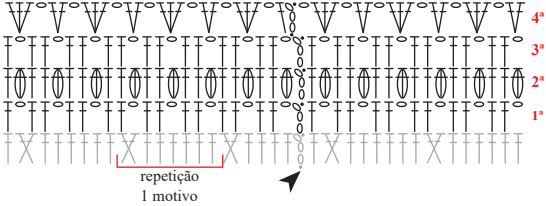
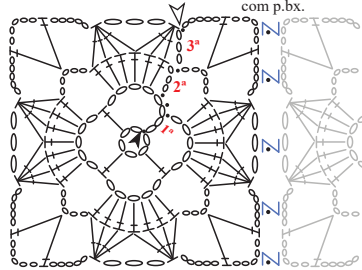
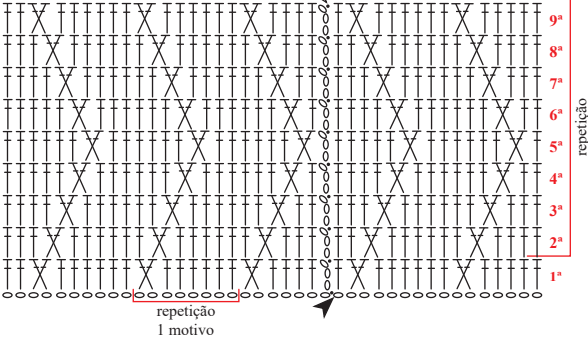


Diagrama 1 - Square



- Legenda
- corr.
  - + p.b.
  - p.bx.
  - ⊥ p.a.
  - ∩ 2 p.a.
  - ⋈ 4 p.a.f.j. em pts. de bases diferentes
  - ⊖ 3 p.a.f.j. no mesmo p. de base
  - ⊗ picô
  - ↑↑ sentido do trabalho
  - ▲ início
  - △ arremate

Diagrama 2 - Ponto fantasia (A)



Esquema de medidas  
 parte da frente = parte de trás

