

Diagrama 1 - Ponto fantasia (A)

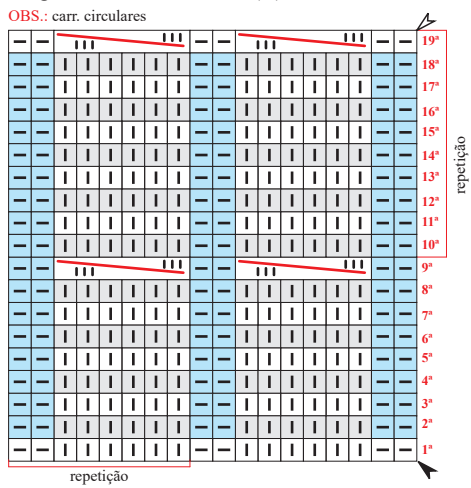


Diagrama 2 - Ponto fantasia (B)

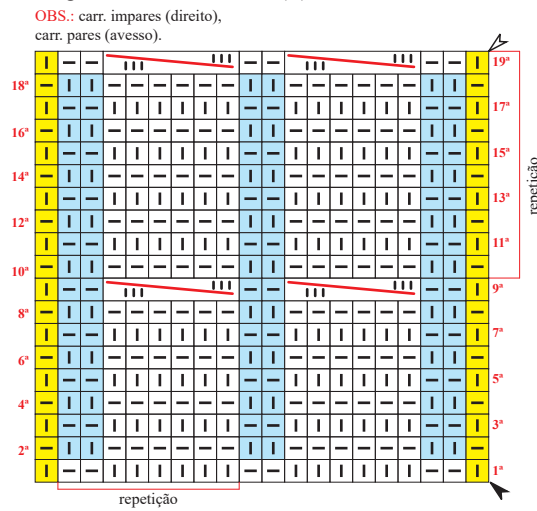
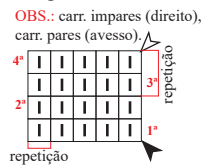
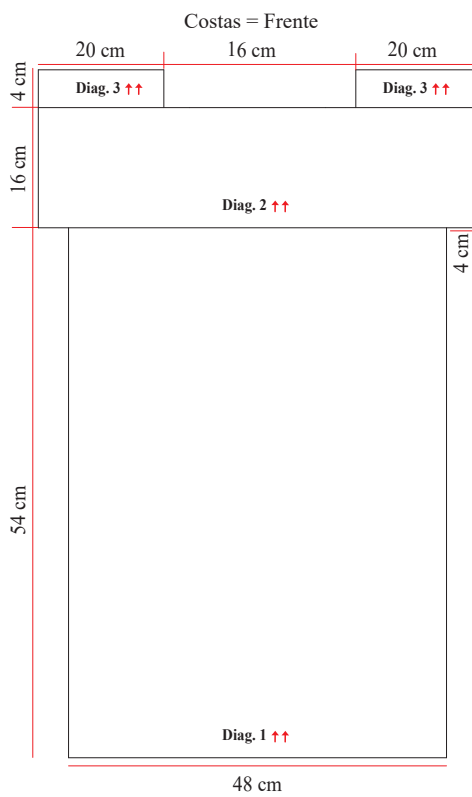


Diagrama 3 - Cordões de tricô



Esquema de medidas



Legenda

█ meia

█ tricô

█ pts. de borda

█ pts. soltos sobre o trabalho,

siga as instruções na receita.

colocar 3 pts. à espera numa ag. auxiliar na frente

do trab., tric. 3 m., retorne o p. deixado à espera

para a ag. de tricô e tric. em m.

▲ arremate

▲ início

↑↑ sentido do trabalho