

Diagrama 1 - Barra 1/1

OBS.: carr. ímpares (direito), carr. pares (avesso).

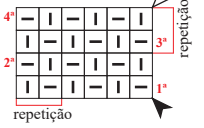


Diagrama 2 - Ponto meia

OBS.: carr. ímpares (direito), carr. pares (avesso).

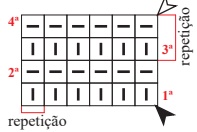
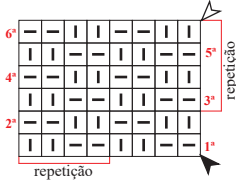


Diagrama 3 - Barra 2/2

OBS.: carr. ímpares (direito), carr. pares (avesso).



Legenda

□ meia

□ tricô

■ pts. de borda

colocar 3 pts. à espera numa ag. auxiliar na frente do trab., tric. 3 m., retorne o p. deixado à espera para a ag. de tricô e tric. em m.

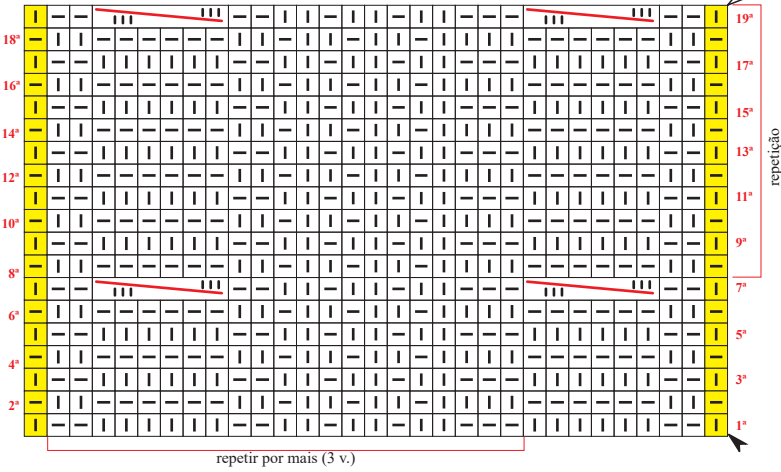
▲ início

△ arremate

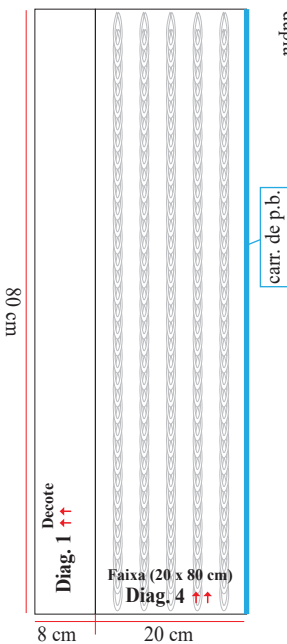
↑↑ sentido do trabalho

Diagrama 4 - Ponto fantasia

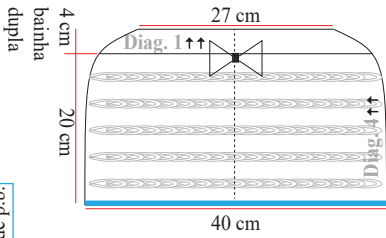
OBS.: carr. ímpares (direito), carr. pares (avesso).



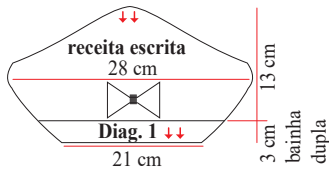
Pelerine (1ª etapa)



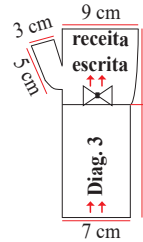
Pelerine (2ª etapa)



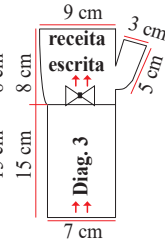
Boina



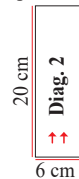
Luva esq.



Luva dir.



Faixa para o laço da boina, pelerine



Faixa para o laço luvas

