

Diagrama 1- Cordões de tricô - (carr. ida e volta)

OBS.: carr. ímpares (direito), carr. pares (avesso)

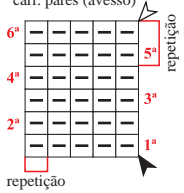
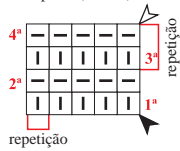


Diagrama 2 - Ponto meia

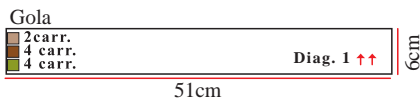
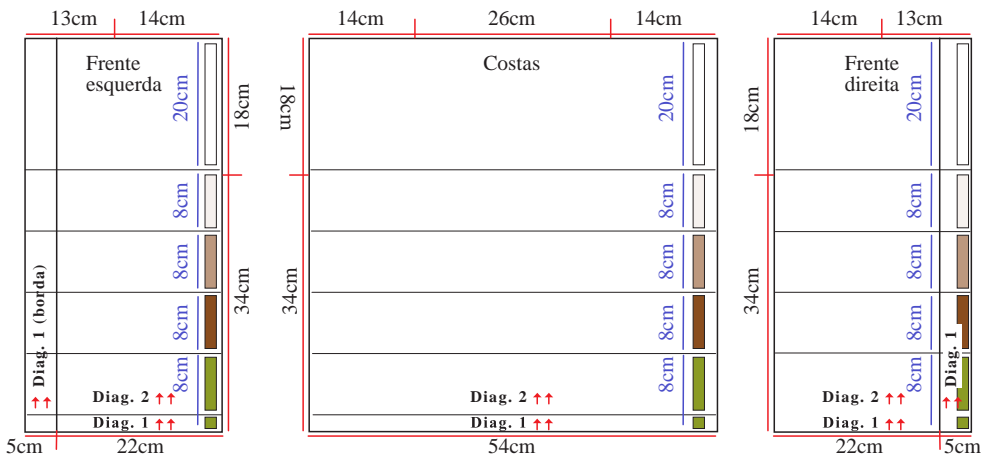
OBS.: carr. ímpares (direito), carr. pares (avesso)



Legenda

- meia
- tricô
- ▲ início
- ⤴ arremate
- ↑↑ sentido do trabalho

Esquema de medidas



Escala de cores:

- 5 - branco
- 4 - off white
- 3 - porcelana
- 2 - tabaco
- 1 - verde militar

