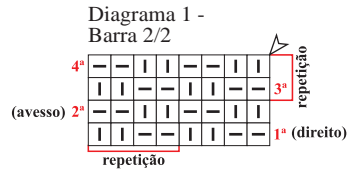
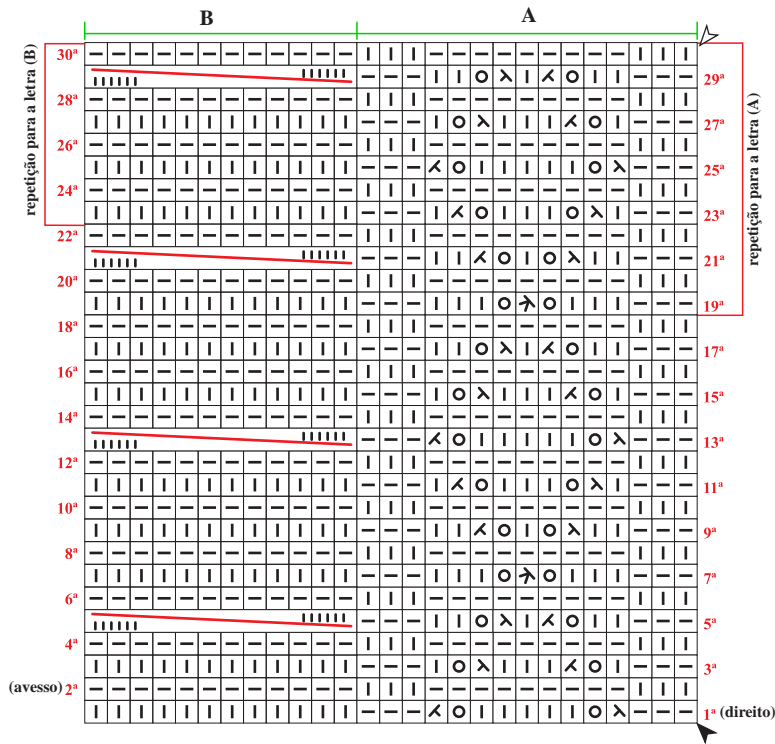


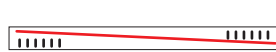
Diagrama 2 - Ponto fantasia (I)

A = ponto ajurado; B = trança.



Legenda do tricô

- meia
- tricô
- pipoca
- 2 pts. j. em m.
- ms
- md



colocar 6 pts. à espera numa ag. auxiliar na frente do trabalho, 6 m., retorne o pts. deixados à espera para a ag. de tricô e trab. em m.

- início
- arremate
- sentido do trabalho

Legenda do crochê

- corr..
- p.bx.
- p.b.
- 2 p.b. no mesmo p. de base
- anel mágico

Diagrama 3 - Ponto fantasia (II)

C = cordões de tricô; D = direito em meia, avesso em tricô; E = ponto ajurado com pipoca.

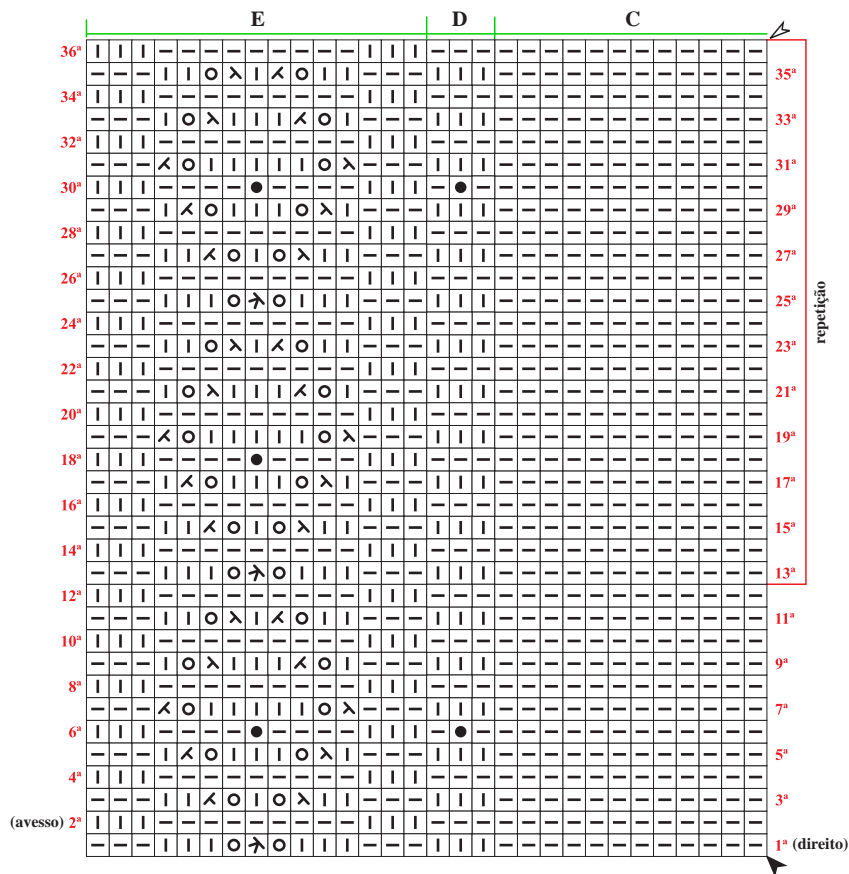
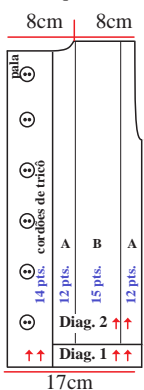


Diagrama 4 - Forro do botão

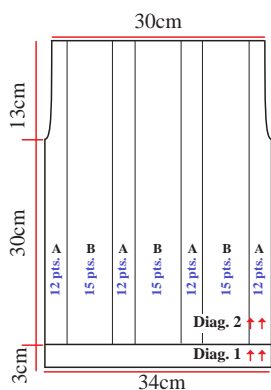


Esquema de medidas

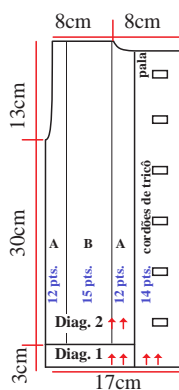
Frente esquerda



Costas



Frente direita



Manga

