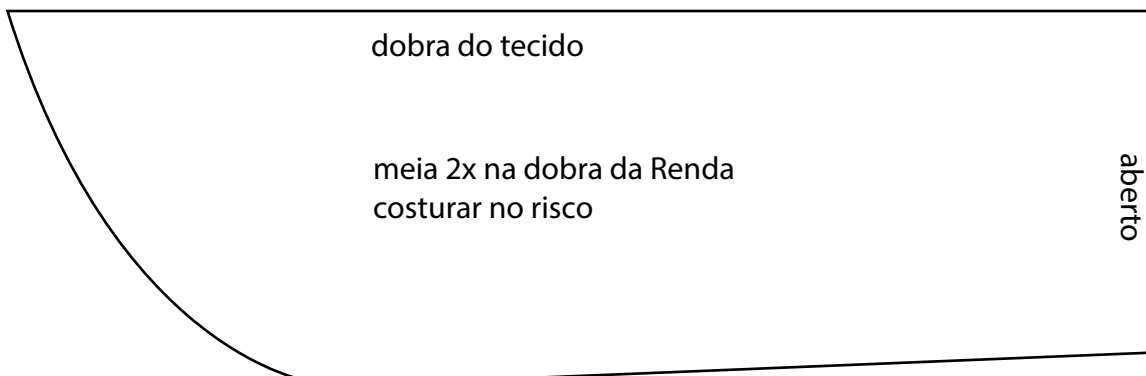
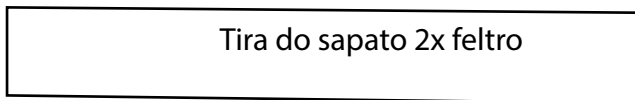
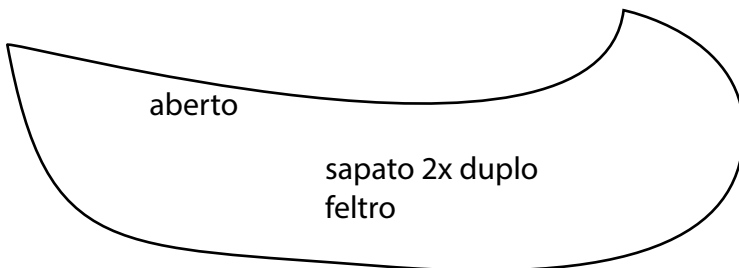
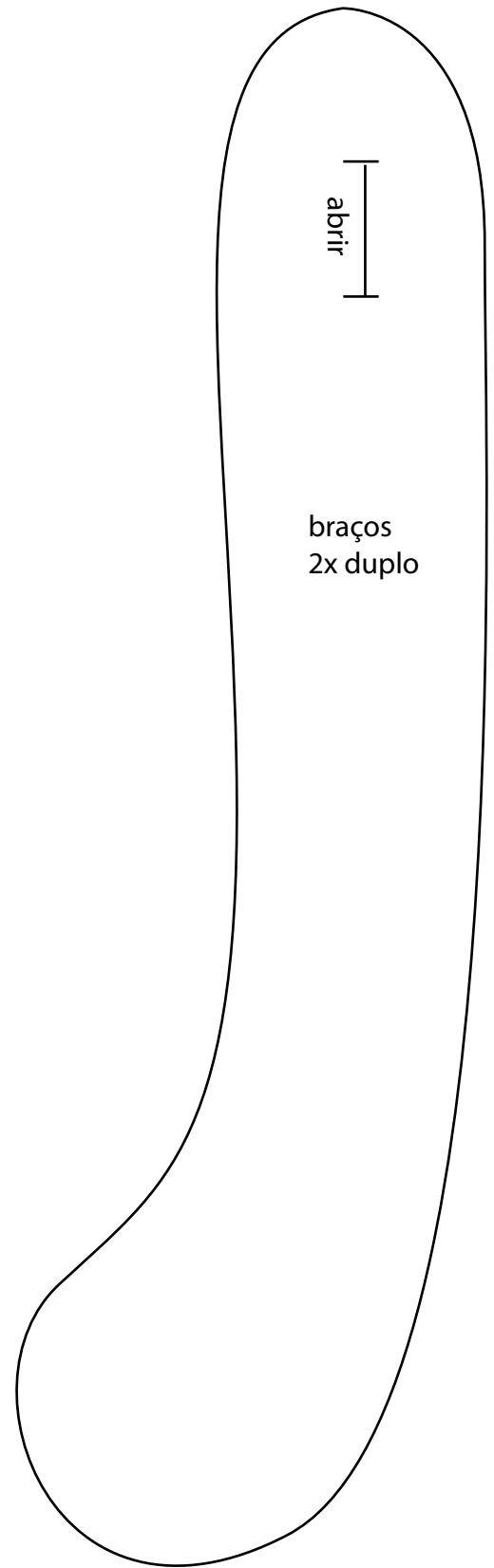
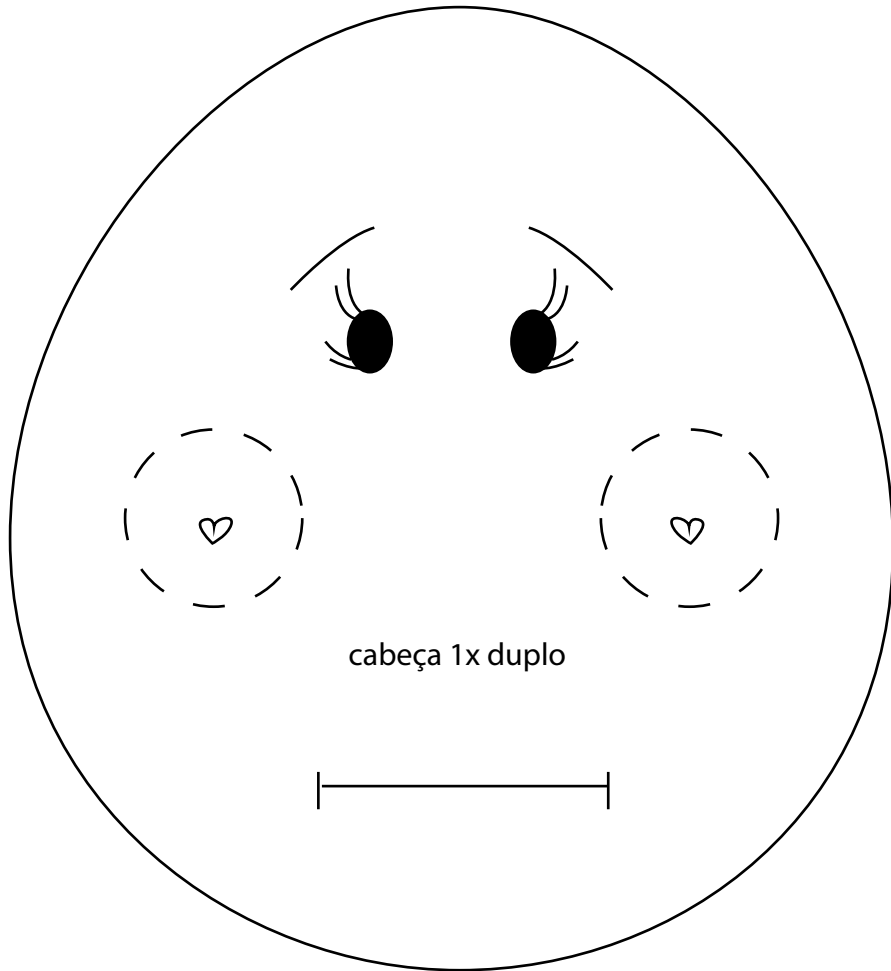
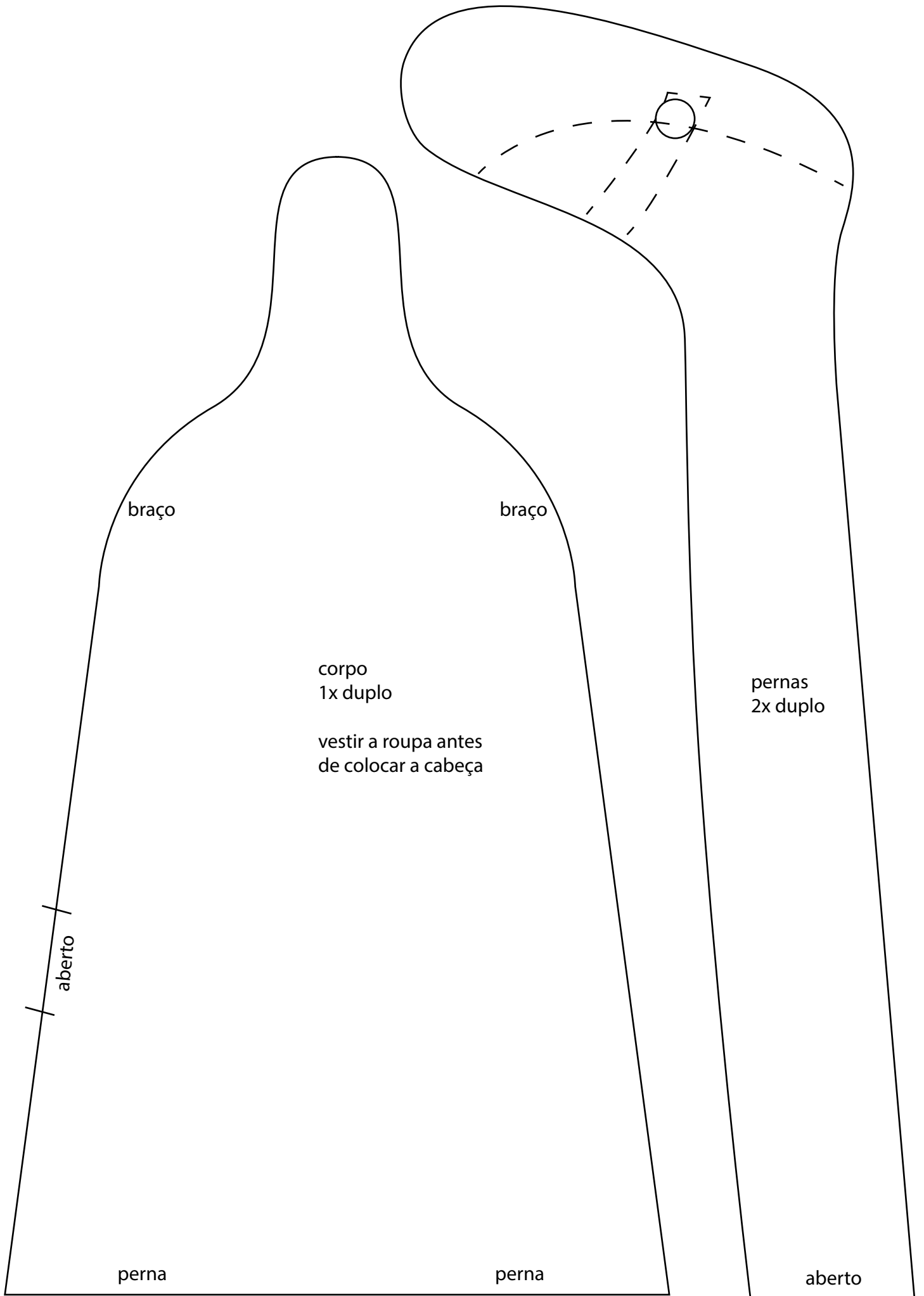


# Boneca Melinda





braço

braço

corpo  
1x duplo

vestir a roupa antes  
de colocar a cabeça

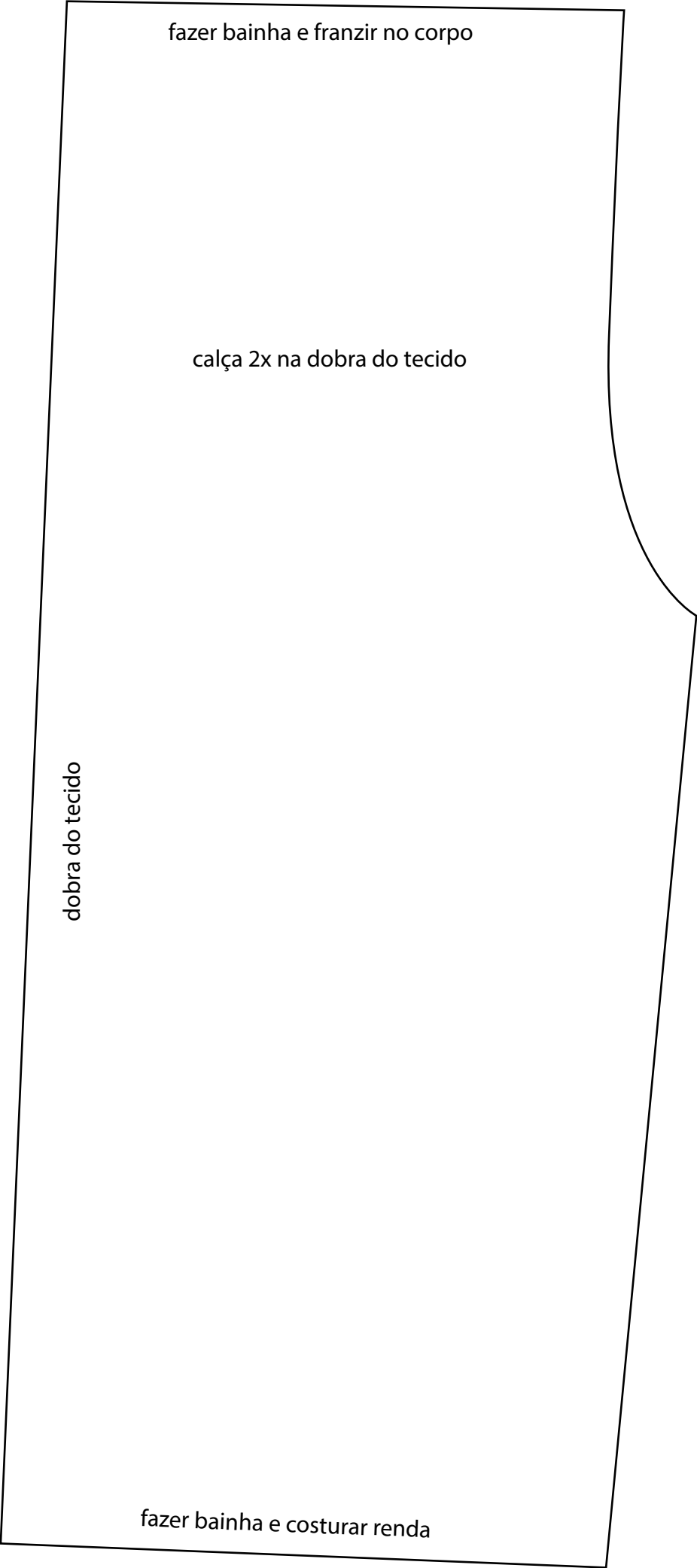
pernas  
2x duplo

aberto

perna

perna

aberto



fazer bainha e franzir no corpo

calça 2x na dobra do tecido

dobra do tecido

fazer bainha e costurar renda

dobra do tecido

decote

Blusa do Vestido  
2x na dobra do tecido

Alinhar no corpo  
e encher c/ pouquinho  
de fibra siliconada

fazer bainha