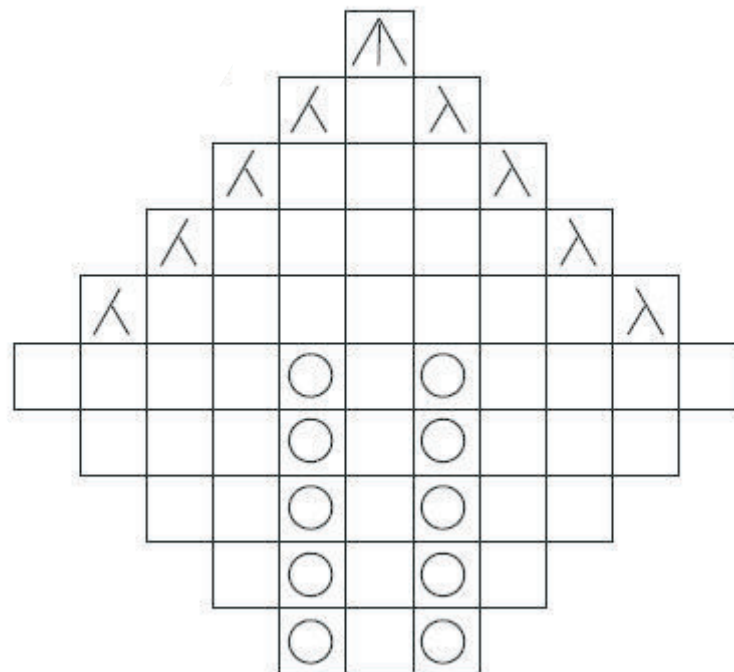


# PURPLE PELERINE - LEAF



- = knit
- = yarn over
- ∧ = k 2 tog
- ⌂ = 2 st crossed to the left over 2 st. (place 2 st on a stitch holder in front of the work, knit 1 st. and purl that st. on hold)
- λ = Single decrease – slip one and pass slipped stitch over, bind it off as if to knit.
- ⤴ = Double decrease – slip 2 sts. together as if to knit, bind 2 sts. off as if to purl.
- = Leaf – Differentiated stitch black square (follow the diagram page).

WS – follows the st.

Repeat from \*a\*