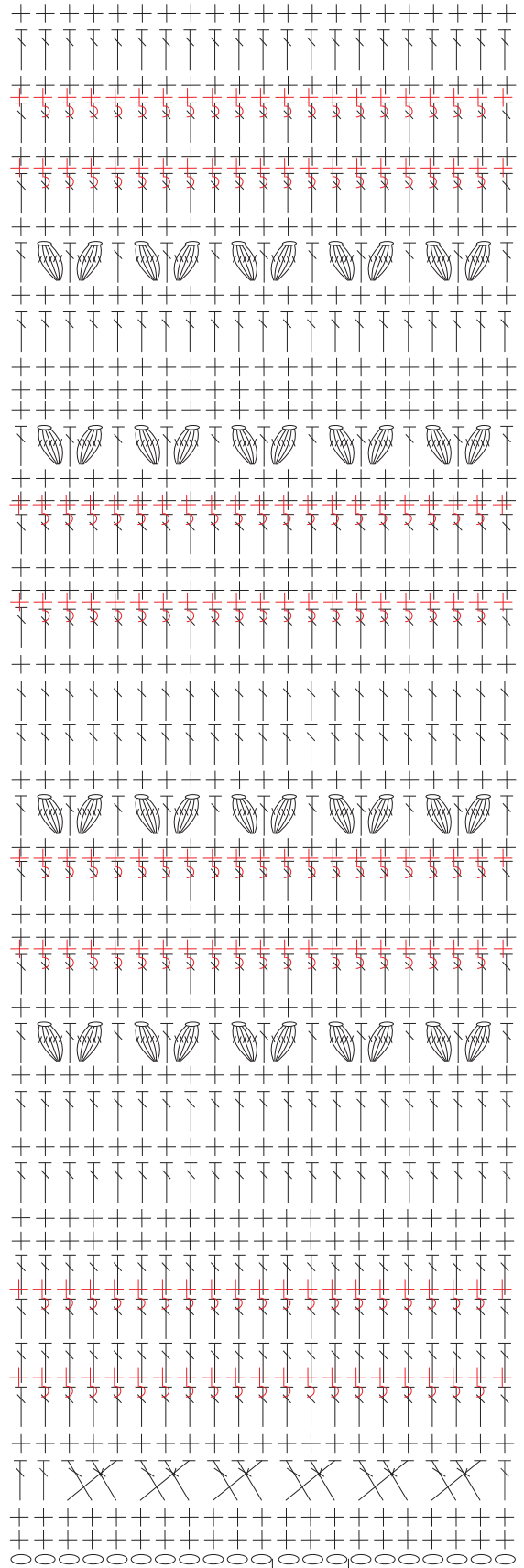
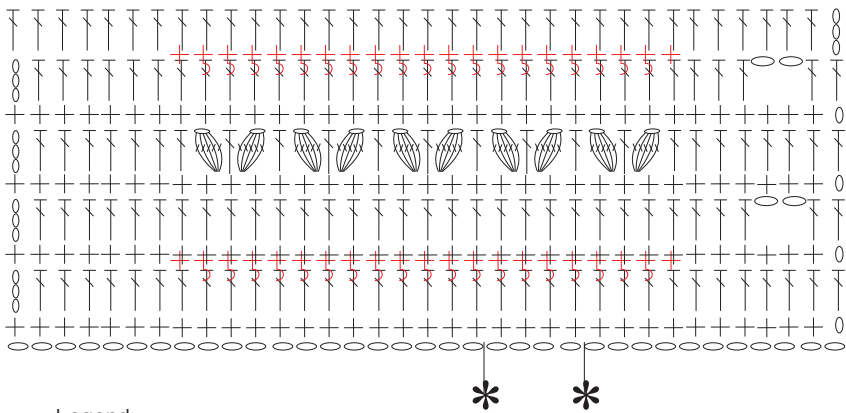


Pattern stitch – skirt



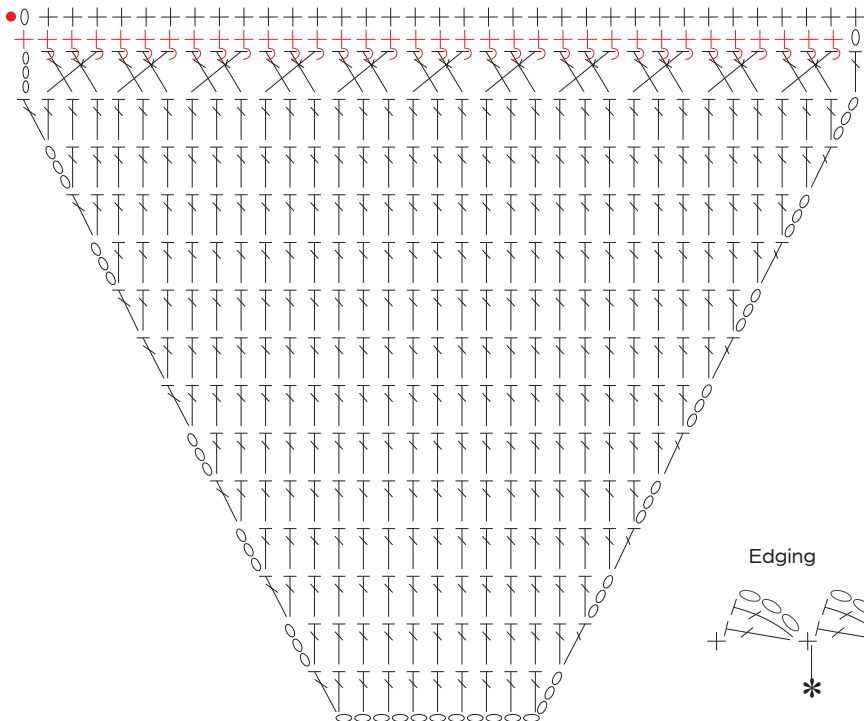
Top band



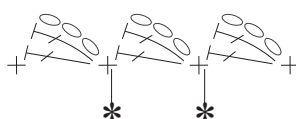
Legend

- = ch
  - + = sc
  - ∟ = dc
  - + = sc worked in back loop only
  - X = 1 crossed stitch to the left over 2 sts (skip 2 sts of the previous row, work the 3rd st in dc, then return to the 1st skipped st and work the 1st and 2nd sts in dc)
  - ⊖ = 5 dc worked together
  - ⊕ = 5 dc worked together from the back.
- Repeat from \* to \*.

Cup



Edging



Cup edging

