

Chart 1 - 2x2 rib

NOTE: odd rows (RS), even rows (WS).

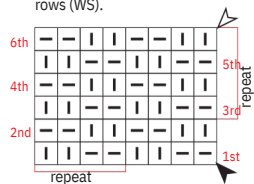


Chart 2 - established lace pattern

NOTE: odd rows (RS), even rows (WS).

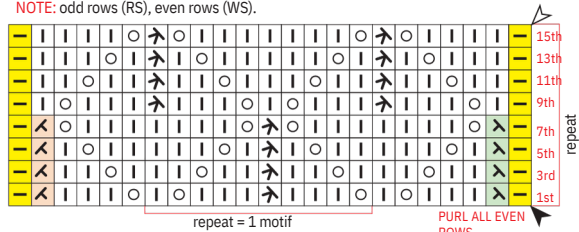
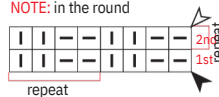


Chart 3 - 2x2 rib

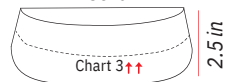
NOTE: in the round



Legend

- purl
- knit
- yarn over
- k2tog
- ssk
- CDD
- edge stitches
- beginning
- bind-off
- direction of the work

Collar



Measurements chart

