

Chart 1 – Base

Note: work in rounds

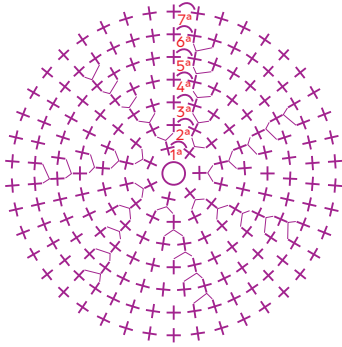
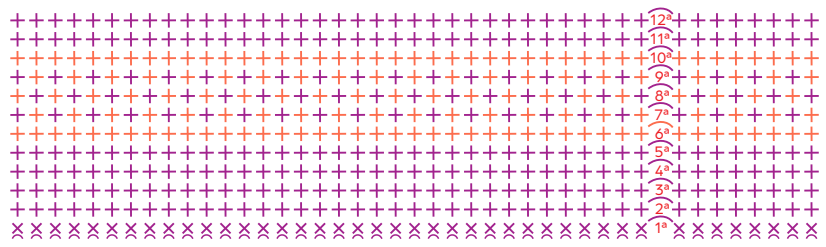


Chart 2 – Side

Note: work in rounds



Key

○ Chain

• Slip Stitch

× Single Crochet

⊗ Single Crochet in Back Loop Only

+ Centered Single Crochet

⊕ Increase of 2 Centered Single Crochets in the Same Base Stitch

Invisible Closure (remove the loop from the hook, insert into the first stitch of the row, pull the loop through and off the hook, reserve for the next step, insert the hook into the middle of the stitch formed, yarn over and pull to the front, insert the hook into the reserved loop, yarn over and pull both loops at once)

○ Magic Ring

■ Fio de Malha Premium Círculo – cor: 6291 (Vinho quente)

■ Fio de Malha Premium Círculo – cor: 3363 (Rosa-amor)