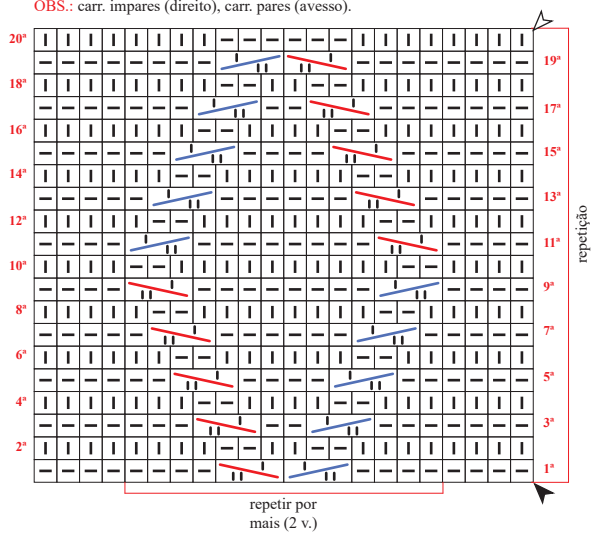









Diagrama 1 - Ponto fantasia

OBS.: carr. ímpares (direito), carr. pares (avesso).



Legenda

-  tricô
-  meia
-  colocar 1 p. à espera numa ag. auxiliar atrás do trab., tric. 2 m., retorne o p. deixados à espera para a ag. de tricô e tric. em m.
-  colocar 2 pts. à espera numa ag. auxiliar na frente do trab., tric. 1 m., retorne os pts. deixados à espera para a ag. de tricô e tric. em m.
-  início
-  arremate
-  sentido do trabalho

**Esquema de medidas
Retângulo (5 peças)**

