

Chart 1 – Pattern stitch (A)

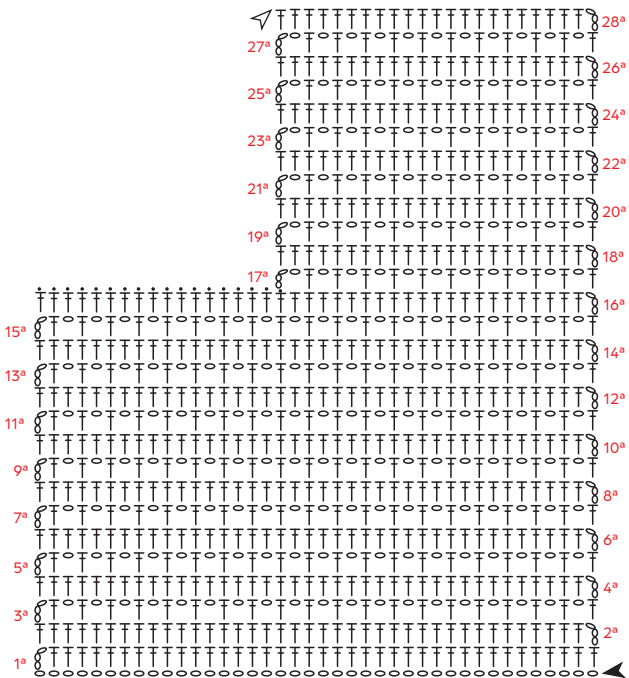


Chart 2 – Pattern stitch (B)

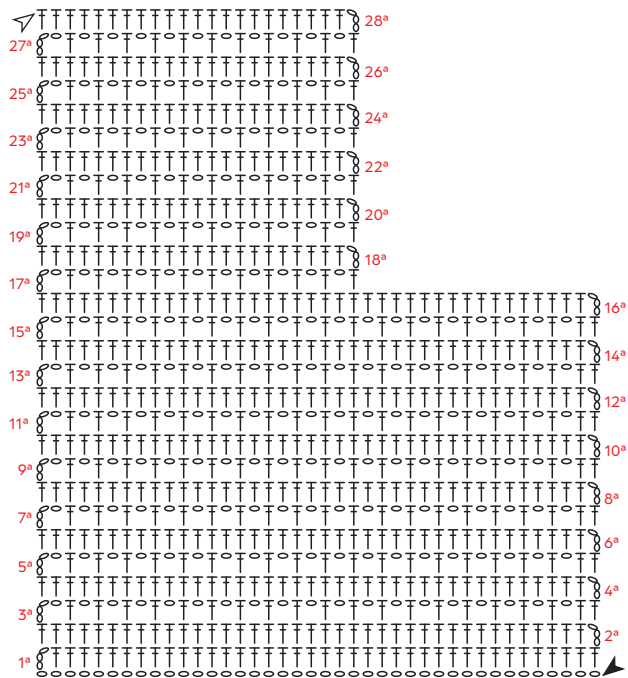


Chart 3 – Pattern stitch (C)

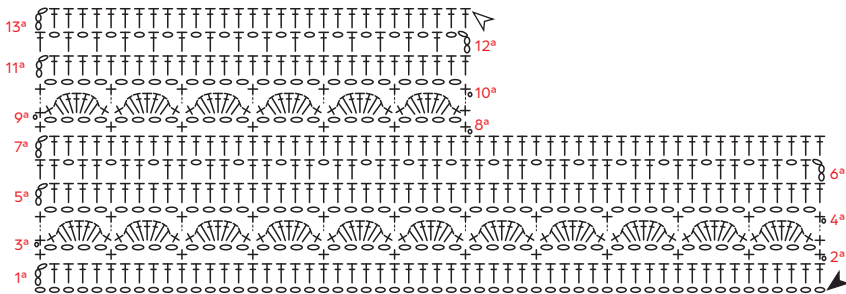


Chart 4 – Pattern stitch (D)

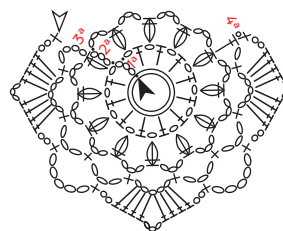


Chart 5 – Edging

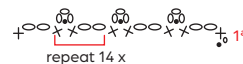
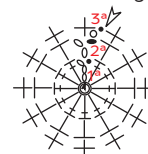
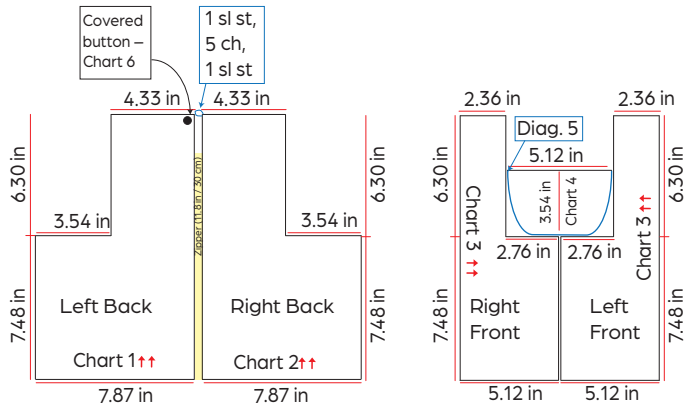


Chart 6 – Button lining



Measurement diagram



Key

- Ch
- Sl st
- + Sc
- ⊥ Hdc
- ⊥ Dc
- ⊥ 2 dc tog
- ⊥ 3 dc tog
- ⊙ Picot
- ▲ Beginning
- △ Fasten off
- ↑↑ Work direction