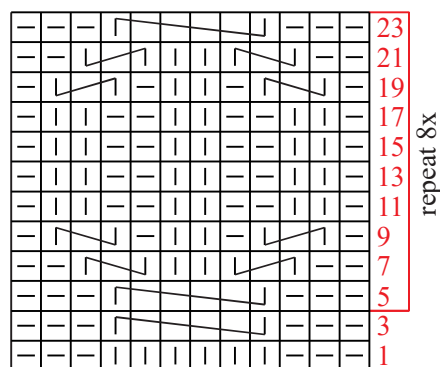
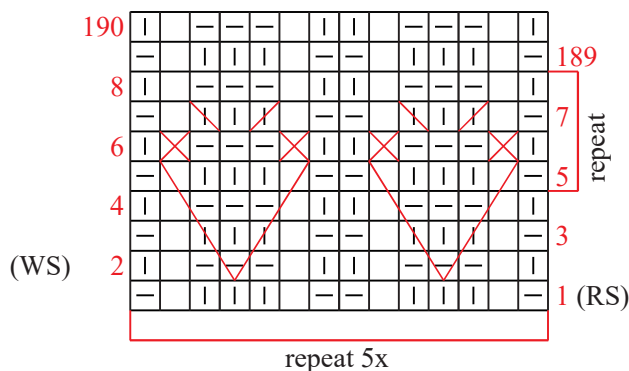


Chart 1 - Cables



Even rows: knit the knit sts and purl the purl sts.

Chart 2 - Motif



#### Stitch key

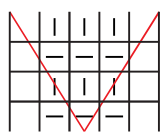
| = knit

- = purl

↘ = 3/3 LC - sl 3 sts onto cn, hold in front, k3, k3 from cn

↘ = 2/1 LPC - sl 2 sts onto cn, hold in front, p1, k2 from cn

↘ = 2/1 RPC - sl 1 st onto cn, hold in back, k2, p1 from cn



= in row 5, insert needle in the second St st of row 1, elongated yo, k3,

insert needle into the same place and make another elongated yo.

drop yo

elongated yo and the first knit st closed tog knitwise.

the third knit st and the elongated yo closed tog knitwise from left to right.

⊗ = slip the long yo

⊗ = the long yo and the first knit stitch closed together

⊗ = the third knit st and the long yo closed together knitwise from the left to the right.