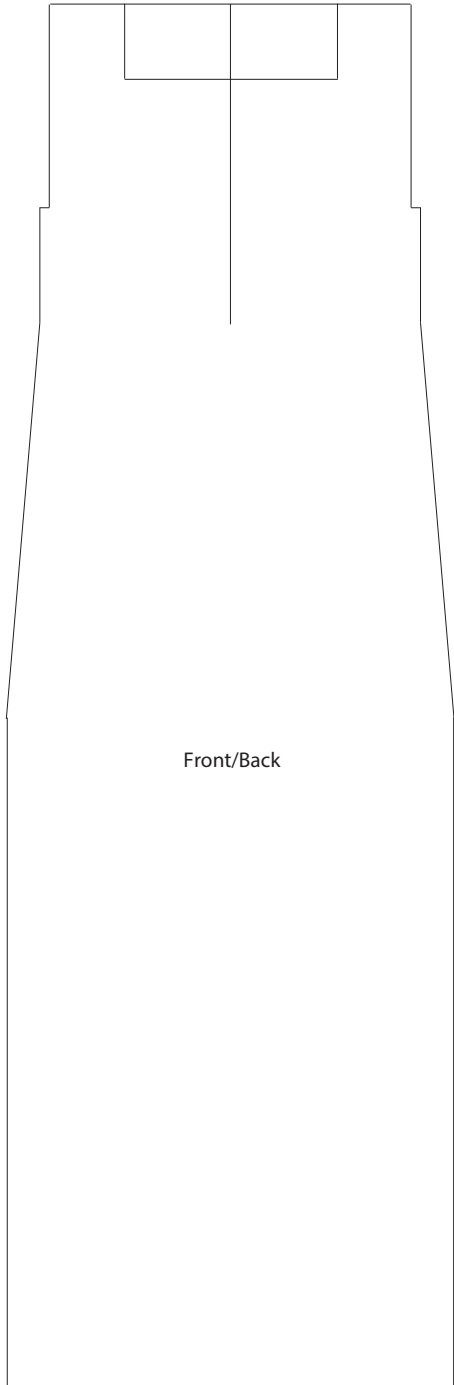


0.39" (1 cm) 2.76" (7 cm) 6.3" (16 cm) 2.76" (7 cm) 0.39" (1 cm)



Front/Back

15.8" (40 cm)

Stitch Key

○ = ch

+ = sc

⌣ = dc

Repeat from * to *

2.76" (7 cm)

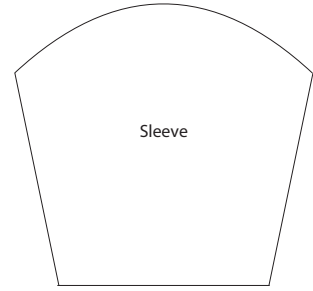
4.72" (12 cm)

4.33" (11 cm)

14.6" (37 cm)

25.2" (64 cm)

11" (28 cm)



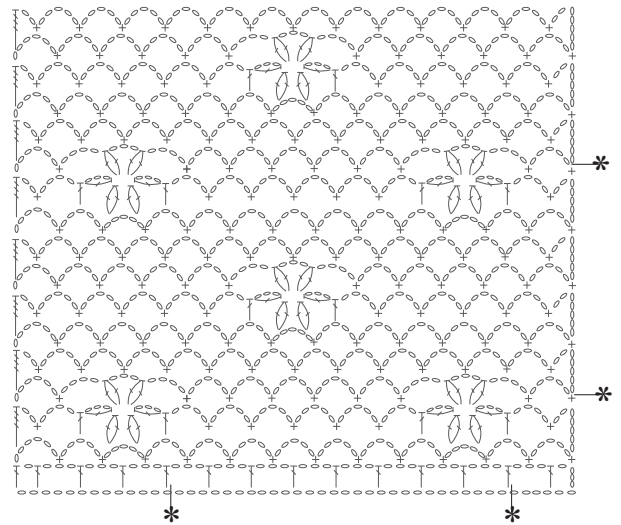
Sleeve

2.36" (6 cm)

8.27" (21 cm)

7.87" (20 cm)

Stitch Pattern 1



Stitch Pattern 2

