

Diagrama 3 -Bojo (2ª etapa)

OBS.: carr. ímpares (avesso), carr. pares (direito).

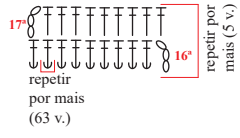


Diagrama 3 -Bojo (1ª etapa)

OBS.: carr. ímpares (avesso), carr. pares (direito).

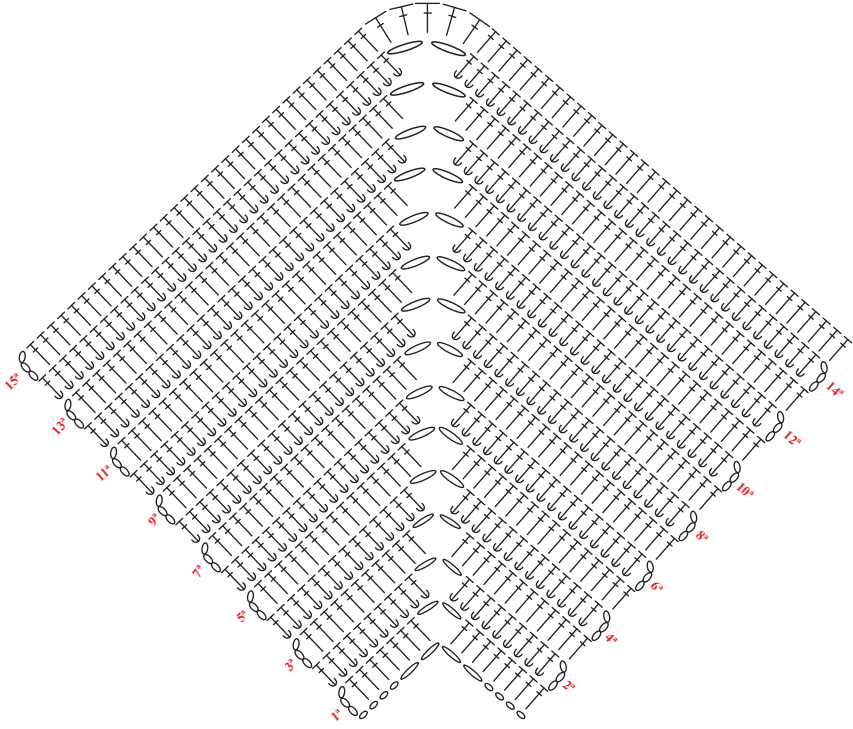


Diagrama 4 - Faixa lateral

OBS.: carr. ímpares (avesso), carr. pares (direito).

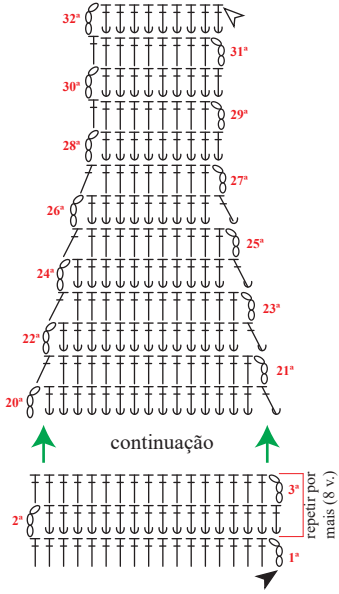
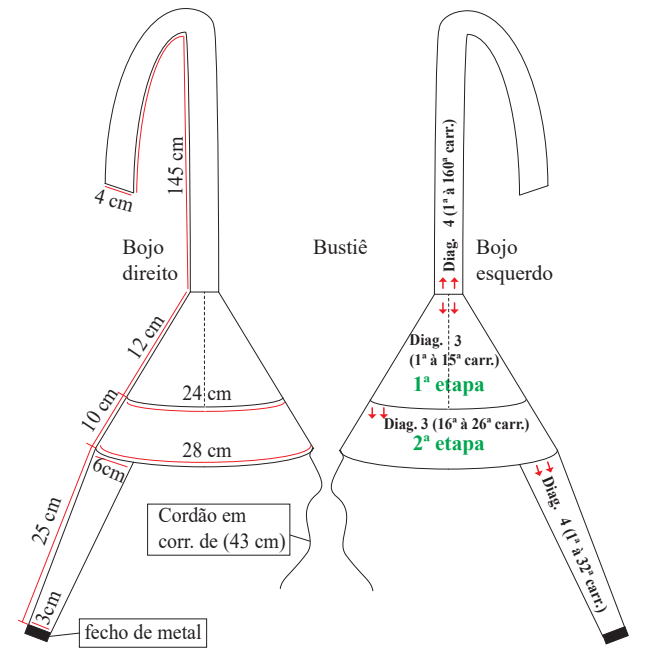
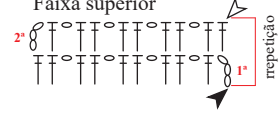


Diagrama 5 - Faixa superior



Esquema de medidas

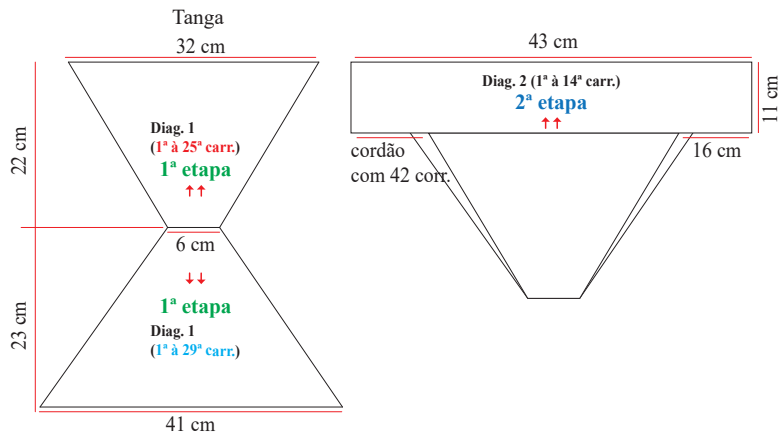


Diagrama 2 - Cós da tanga (2ª etapa)

OBS.: carr. ímpares (direito), carr. pares (avesso).

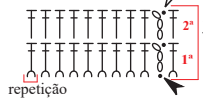
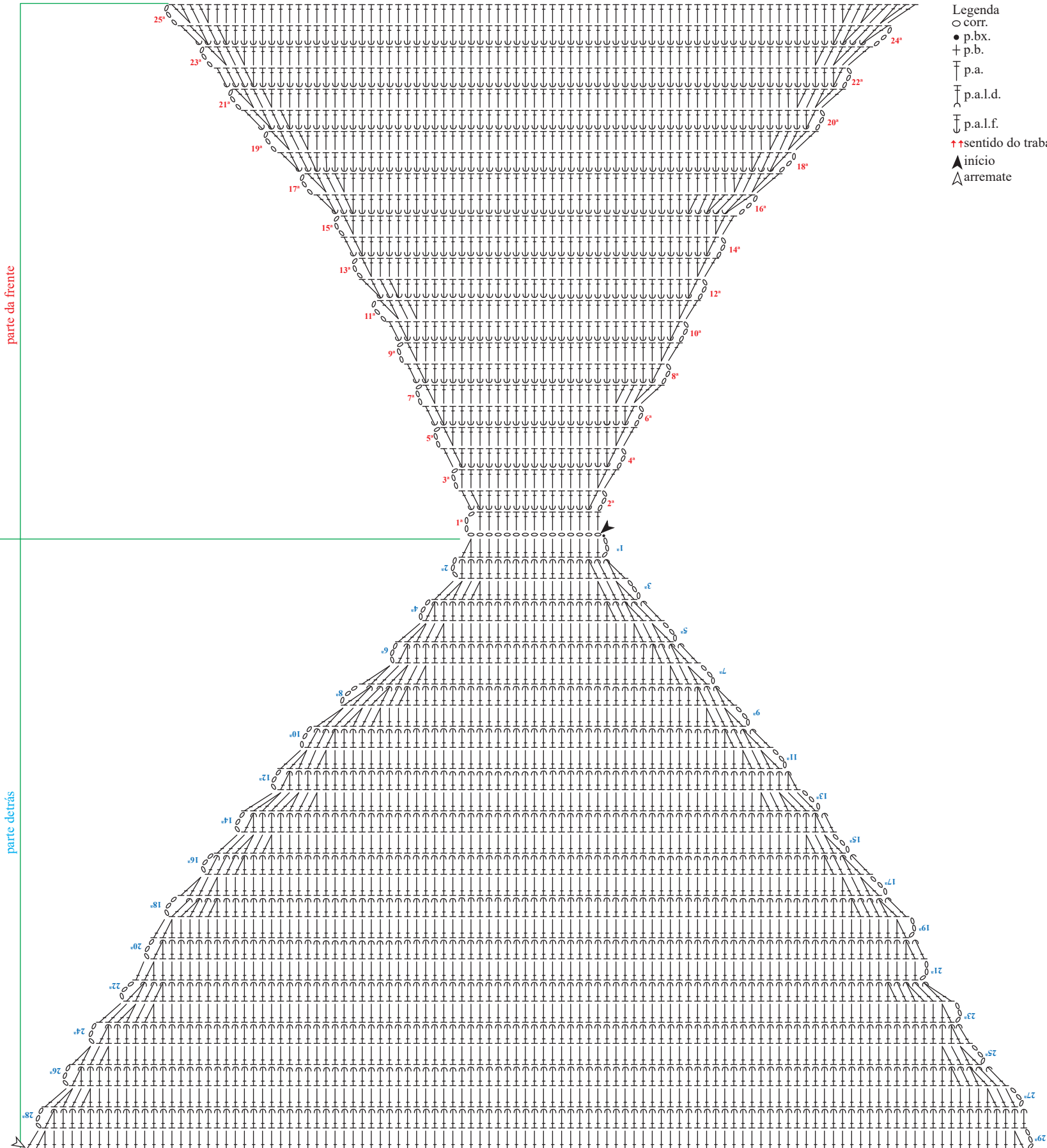


Diagrama 1 -Tanga (1ª etapa)

OBS.: carr. ímpares (avesso), carr. pares (direito).



- Legenda
- corr.
 - p.bx.
 - + p.b.
 - ⌣ p.a.
 - ⌣ p.a.l.d.
 - ⌣ p.a.l.f.
 - ↑↑ sentido do trabalho
 - ▲ início
 - △ arremate