

Diagram 5 - Pattern Stitch (E)

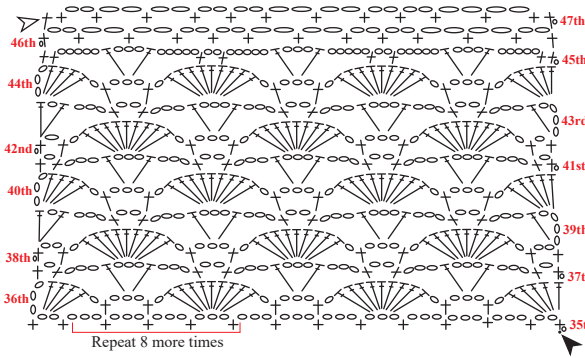


Diagram 7 - Pattern Stitch (G)

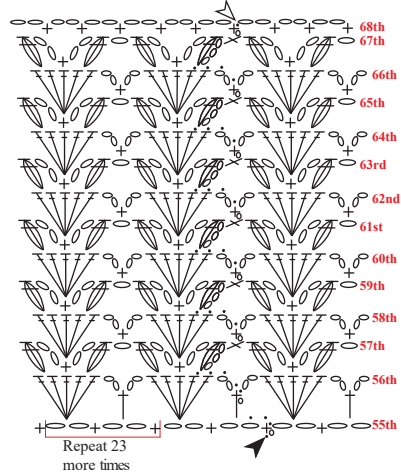
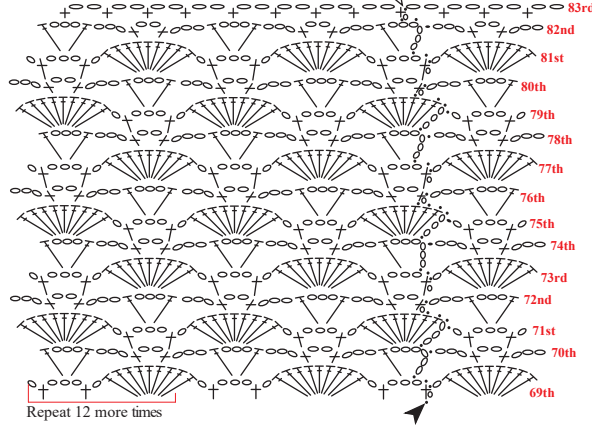


Diagram 8 - Pattern Stitch (H)



Measurement Diagram

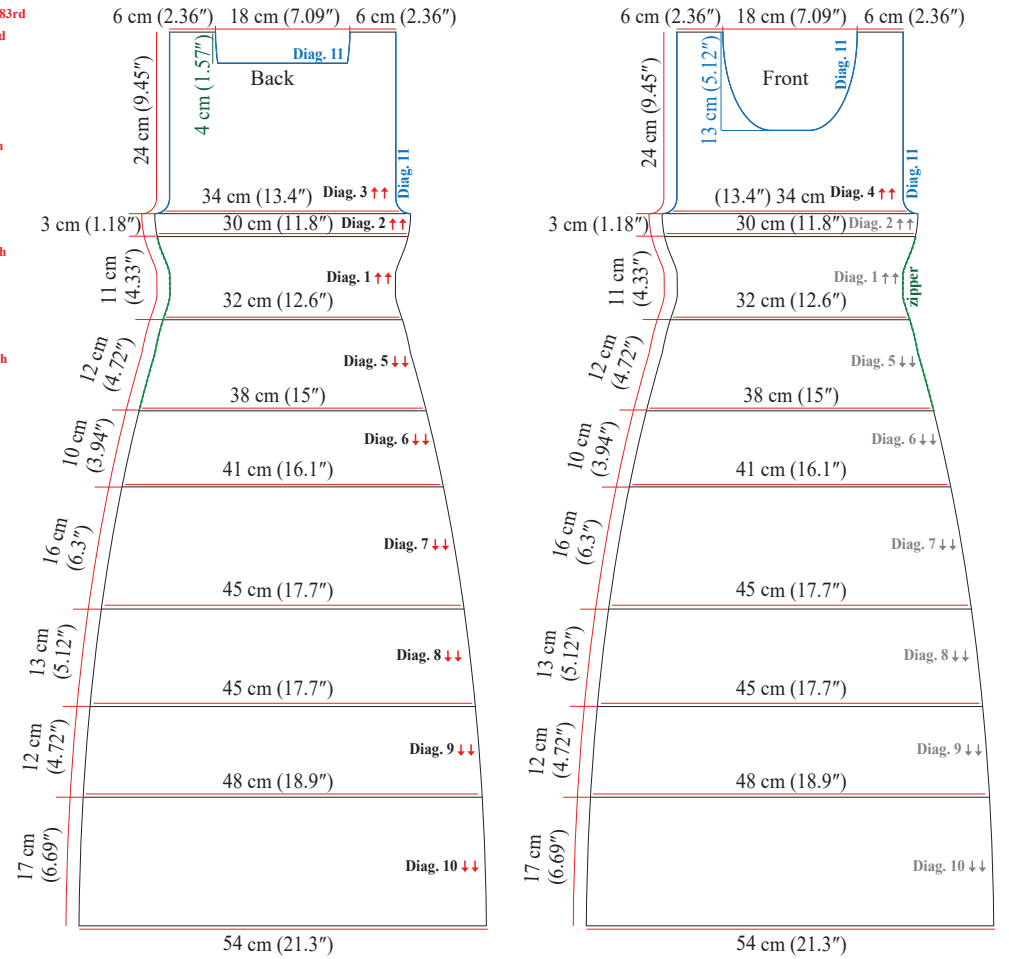


Diagram 2 - Pattern Stitch (B)

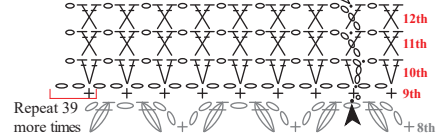


Diagram 6 - Pattern Stitch (F)

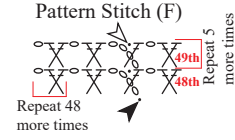
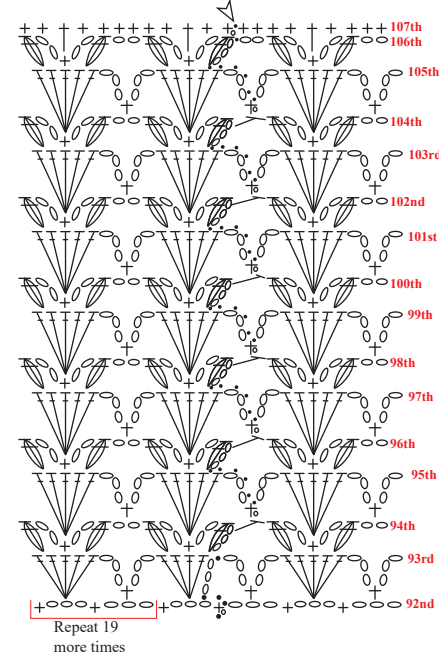


Diagram 10 - Pattern Stitch (J)



- Legend
- ch
  - sl st
  - + sc
  - ┆ hdc
  - ┆ dc
  - ⌘ 2 Xdc
  - ⌘ dc2tog
  - ⌘ dc3tog
  - ⌘ picot
  - ↑↑ direction of the work
  - ▲ start
  - △ finish

Diagram 1 - Pattern Stitch (A)

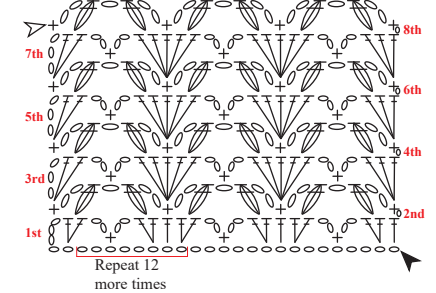


Diagram 9 - Pattern Stitch (I)

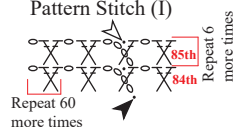


Diagram 11 - Edging



Diagram 3 - Pattern Stitch (C)

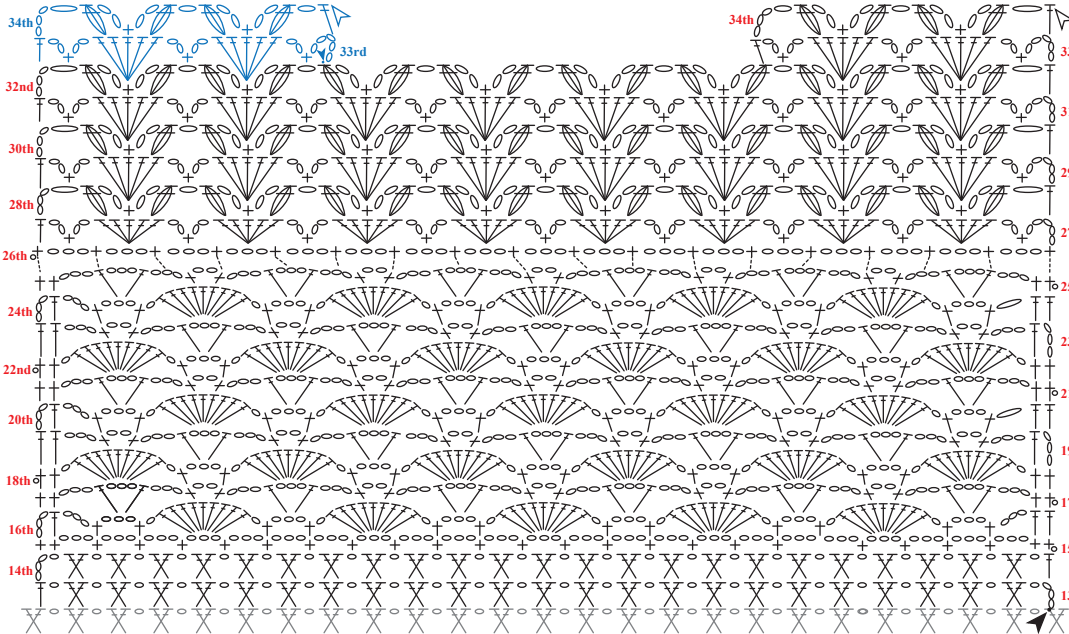


Diagram 4 - Pattern Stitch (D)

