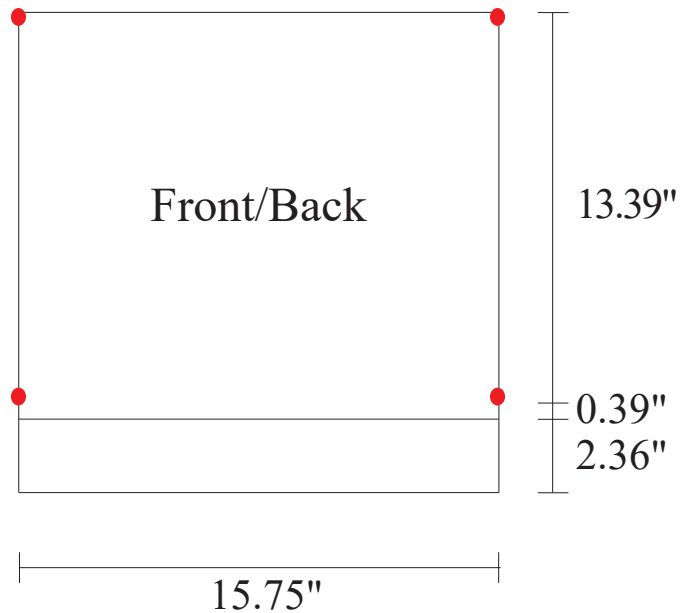
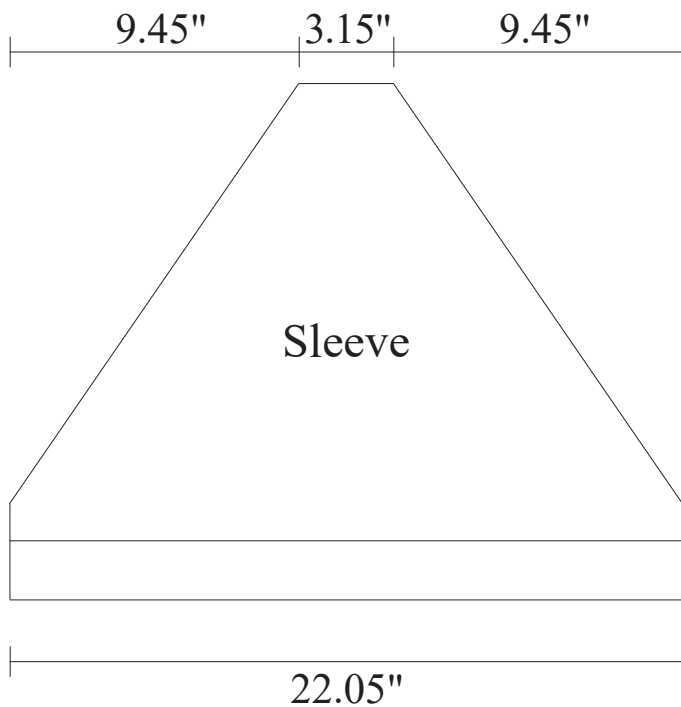
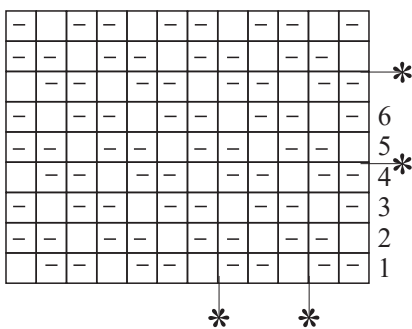


Blusa poncho

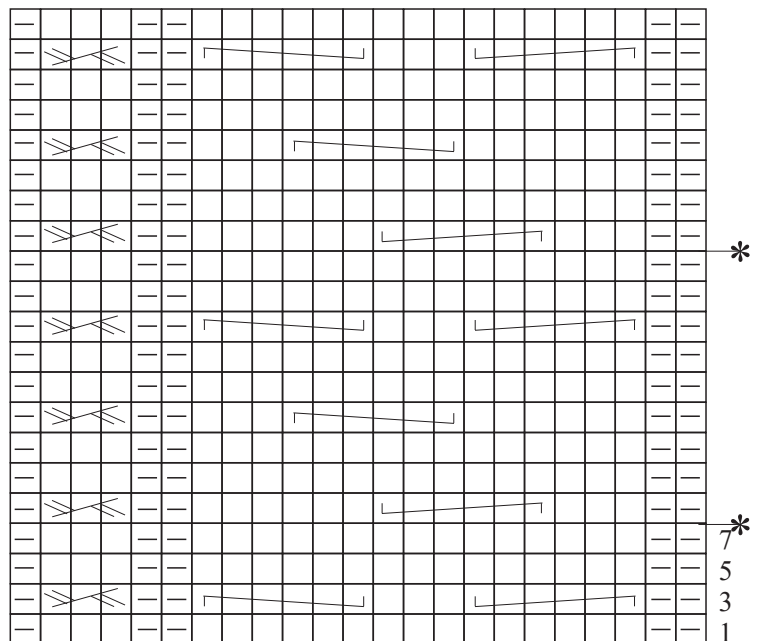
Receita - 134 - 2023



Pattern Stitch



Cord stitch



Legend

□ = k on right side, p on wrong side

— = p on right side, k on wrong side

↗ = 2 sts crossed to the right over 2 sts (place 2 sts on a cable needle behind work, k2, then knit the sts from the cable needle)

↖ = 2 sts crossed to the left over 2 sts (place 2 sts on a cable needle in front of work, k2, then knit the sts from the cable needle)

↗ = 1 st crossed to the right over 2 sts (place 2 sts on a cable needle behind work, knit the next st, then knit the sts from the cable needle)

Wrong side – pattern stitch: all rows are shown in the chart

Wrong side – cord stitch: follow the sts

Repeat from * to *