

- Legend**
- chain
 - slst
 - ⊕ SC
 - ⊥ HDC
 - ⊥ DC
 - ⊥ TC
 - ⊥ picot
 - ⊙ magic ring
 - ▲ beginning
 - △ fasten off
 - ↑↑ direction of the work

Chart 3 - finishing border

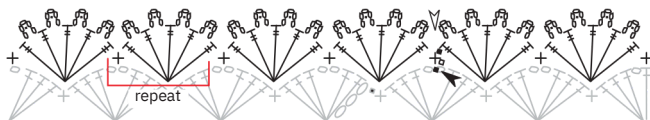


Chart 2 - Lace pattern (B)

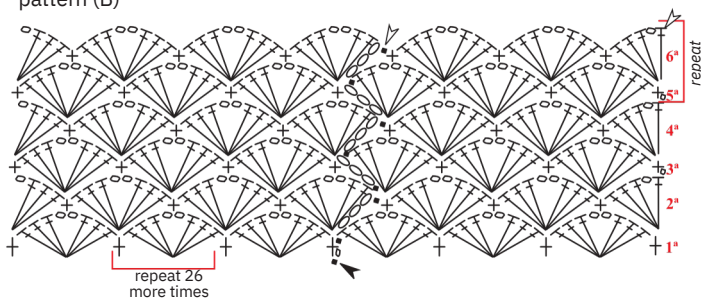
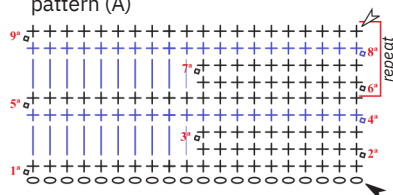


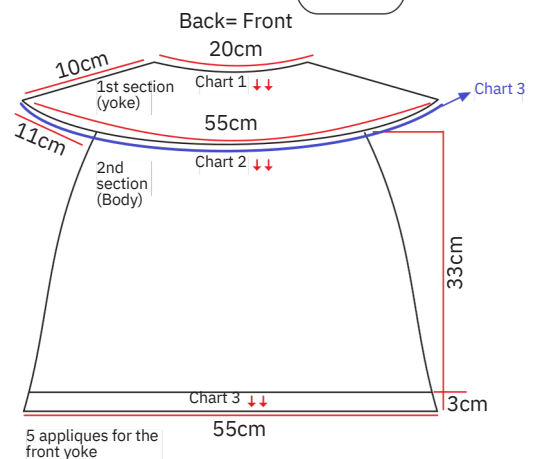
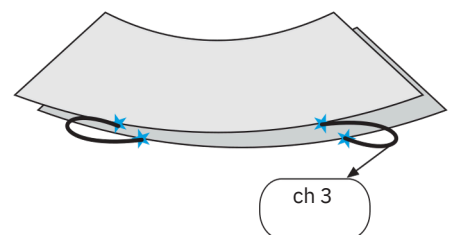
Chart 1 - Stitch pattern (A)



Measurement charts

1st section (chart 1).

Fold the yoke in half to determine front and back. Mark the armholes (11cm), join the stars with a ch 3.



5 appliques for the front yoke

