

Diagrama 1 - Barra 2/2

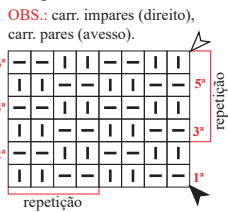


Diagrama 2 - Ponto fantasia (A)

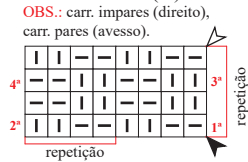


Diagrama 3 - Ponto fantasia (B)

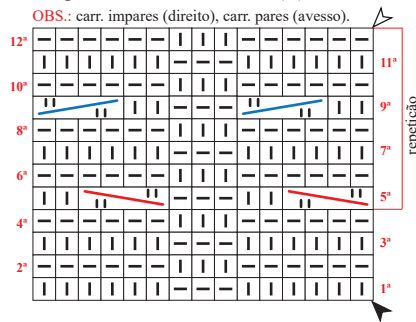
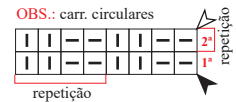


Diagrama 4 - Barra 2/2



Legenda



colocar 2 pts. à espera numa ag. auxiliar na frente do trab., tric. 3 m., retorne os pts. deixados à espera para a ag. de tricô e tric. em m.



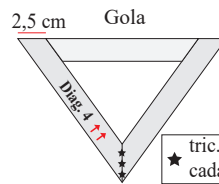
colocar 2 pts. à espera numa ag. auxiliar atrás do trab., tric. 2 m., retorne os pts. deixados à espera para a ag. de tricô e tric. em m.



↑↑ sentido do trabalho

▲ início

△ arremate



Esquema de medidas

