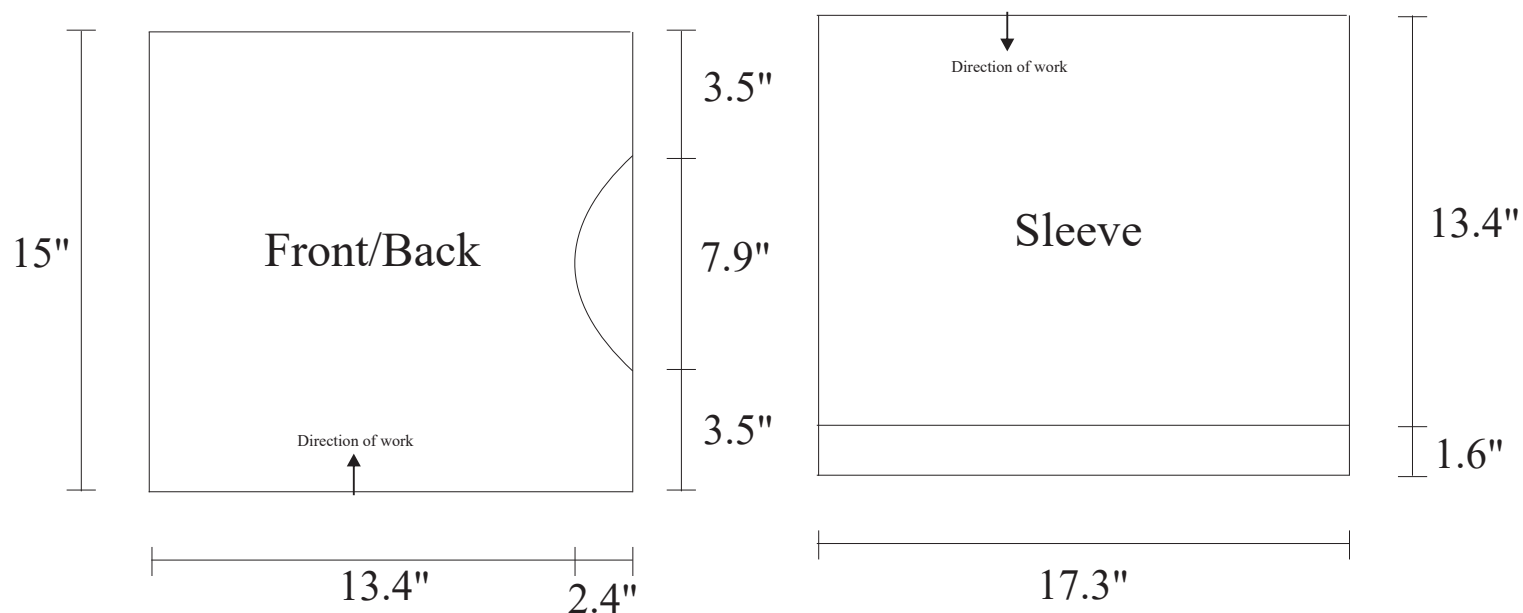
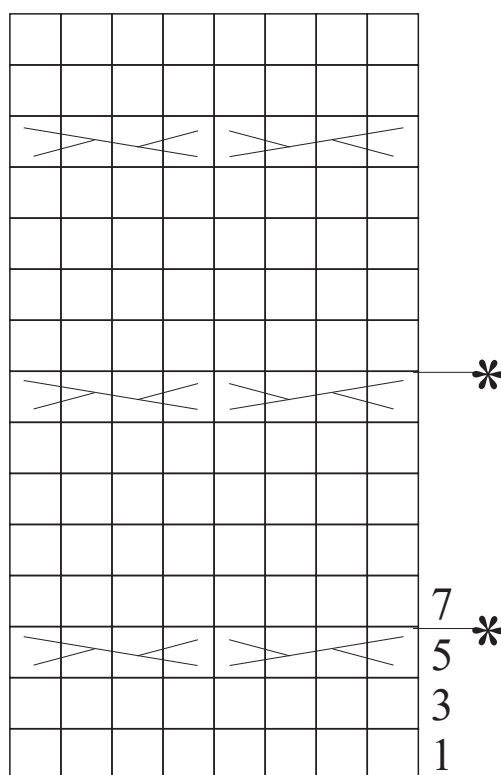


Sweater Pattern – 246 – 2024



Cable stitch



Legend

- = k. (knit)
- = 2 sts crossed to the left over 2 sts (place 2 sts on a cable needle in front of the work, knit 2 sts, then knit the held sts)
- = 2 sts crossed to the right over 2 sts (place 2 sts on a cable needle at the back of the work, knit 2 sts, then knit the held sts)
- Wrong side: p. (purl)
- Repeat from * to *