

Chart 2 – Pattern Stitch (B)

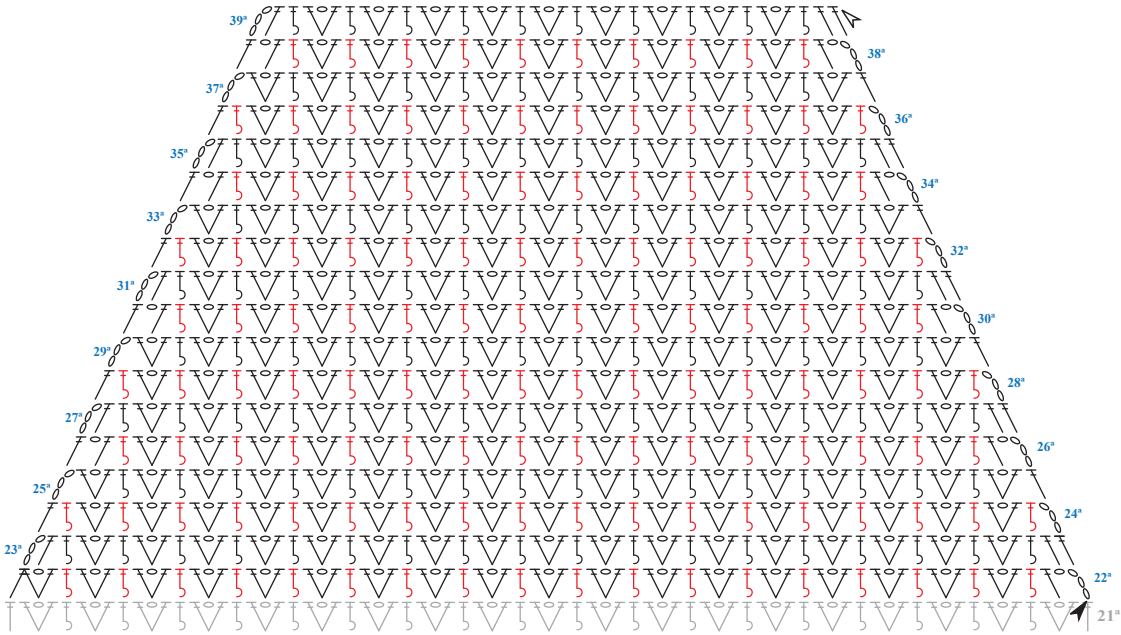


Chart 3 – Pattern Stitch (C)

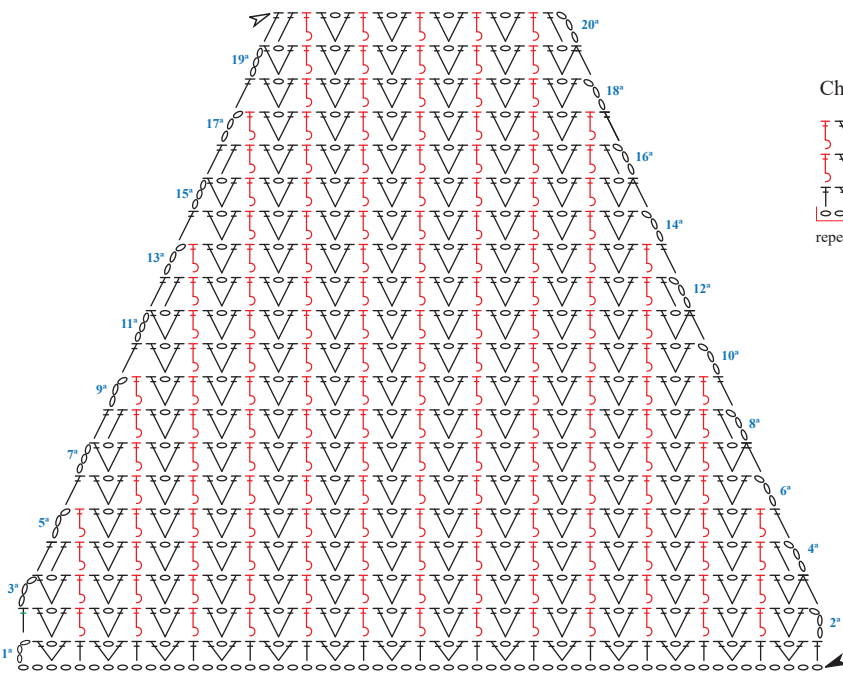


Chart 1 – Pattern Stitch (A)

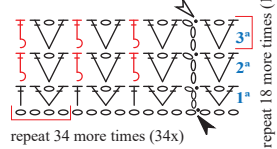
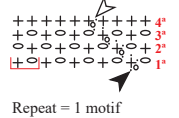


Chart 4 – Edging Pattern



Key

- ch
- sl st
- + sc
- ⊥ dc
- ⌘ dc2tog
- ⌈ FPdc
- ⌋ BPdc
- ↑↑ direction of work
- ▲ start
- △ fasten off

Measurement Schematic

