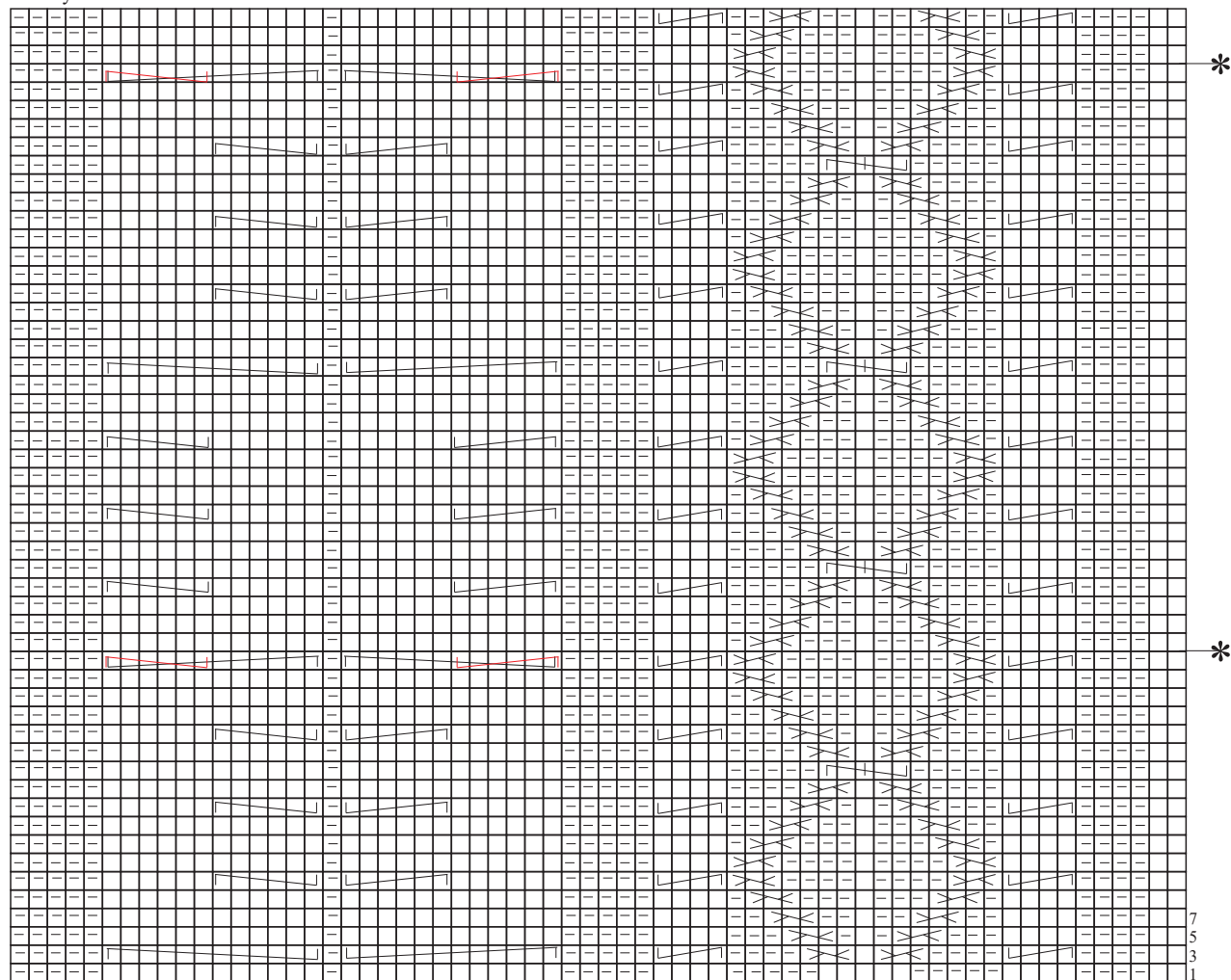


Twisted Cropped Top

Fantasy stitch



Stitch Key

↑
middle

- = k. (knit)
 - = p. (purl)
 - ✕ = 2 sts crossed to the left over 1 p. (place 2 sts on a cable needle in front of the work, purl 1, then knit the held sts).
 - ✕ = 2 sts crossed to the right over 1 p. (place 1 st on a cable needle behind the work, knit 2, then purl the held st).
 - ∩ = 2 sts crossed to the left over 2 sts (place 2 sts on a cable needle in front of the work, knit 2, then knit the held sts).
 - ∩ = 2 sts crossed to the right over 2 sts (place 2 sts on a cable needle behind the work, knit 2, then knit the held sts).
 - ∩ = 2 sts crossed to the left over 3 sts (place 2 sts on a cable needle in front of the work, place 1 st on hold behind the 2 held sts, knit the next 2 sts, then purl the held st and knit the remaining held sts).
 - ∩ = 3 sts crossed to the left over 3 sts (place 3 sts on a cable needle in front of the work, knit 3, then knit the held sts).
 - ∩ = 3 sts crossed to the right over 3 sts (place 3 sts on a cable needle behind the work, knit 3, then knit the held sts).
 - ∩ = 6 sts crossed to the left over 6 sts (place 6 sts on a cable needle in front of the work, knit 6, then knit the held sts).
 - ∩ = 6 sts crossed to the right over 6 sts (place 6 sts on a cable needle behind the work, knit 6, then knit the held sts).
 - ∩ = 6 sts crossed to the left over 6 crossed sts (place 6 sts on a cable needle behind the work, place another 3 sts on hold in front of the 6 held sts, knit 3 from the front cable needle, then knit the 3 held sts and the 6 remaining held sts).
 - ∩ = 6 sts crossed to the right over 6 crossed sts (place 6 sts on a cable needle in front of the work, knit the next 6 sts, then place the first 3 held sts on a cable needle in front of the work, knit the other 3 held sts, then knit the last 3 held sts).
- Wrong Side: Work sts as they appear.
Repeat from * to *.